

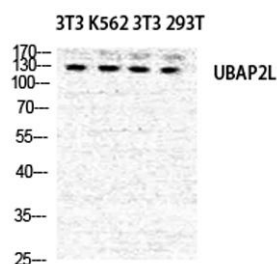
NICE4 rabbit pAb

Cat#: orb770997 (Manual)

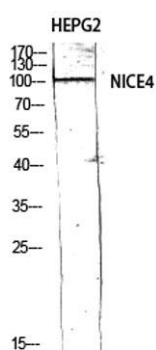
For research use only. Not intended for diagnostic use.

Product Name	NICE4 rabbit pAb
Host species	Rabbit
Applications	WB;ELISA
Species Cross-Reactivity	Human;Mouse
Recommended dilutions	Western Blot: 1/500 - 1/2000. ELISA: 1/20000. Not yet tested in other applications.
Immunogen	The antiserum was produced against synthesized peptide derived from human UBAP2L. AA range:561-610
Specificity	NICE4 Polyclonal Antibody detects endogenous levels of NICE4 protein.
Formulation	Liquid in PBS containing 50% glycerol, 0.5% BSA and 0.02% sodium azide..
Storage	Store at -20°C. Avoid repeated freeze-thaw cycles.
Protein Name	Ubiquitin-associated protein 2-like
Gene Name	UBAP2L
Cellular localization	Cytoplasm, Stress granule .
Purification	The antibody was affinity-purified from rabbit antiserum by affinity-chromatography using epitope-specific immunogen.
Clonality	Polyclonal

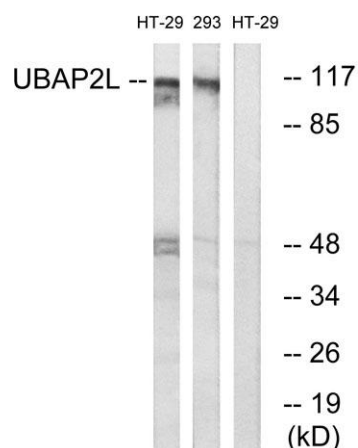
Concentration	1 mg/ml
Observed band	115kD
Human Gene ID	9898
Human Swiss-Prot Number	Q14157
Alternative Names	UBAP2L; KIAA0144; NICE4; Ubiquitin-associated protein 2-like; Protein NICE-4
Background	PTM:Phosphorylated upon DNA damage, probably by ATM or ATR.,similarity:Contains 1 UBA domain.,tissue specificity:Ubiquitous.,



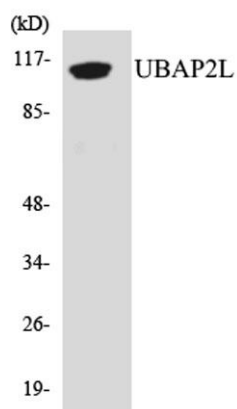
Western Blot analysis of NIH-3T3 K562 NIH-3T3 293T cells using NICE4 Polyclonal Antibody diluted at 1:500



Western Blot analysis of HEPG2 using NICE4 Polyclonal Antibody diluted at 1:500



Western blot analysis of lysates from HT-29 and 293 cells, using UBAP2L Antibody. The lane on the right is blocked with the synthesized peptide.



Western blot analysis of the lysates from Jurkat cells using UBAP2L antibody.