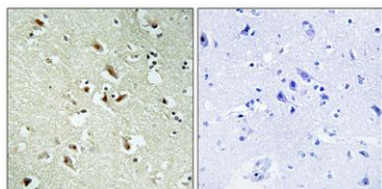


**POM121 rabbit pAb****Cat#: orb770996 (Manual)**

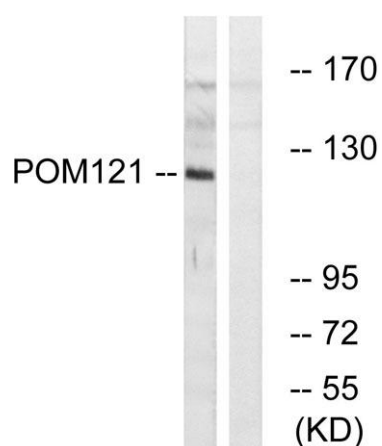
For research use only. Not intended for diagnostic use.

<b>Product Name</b>	POM121 rabbit pAb
<b>Host species</b>	Rabbit
<b>Applications</b>	WB;IHC;IF;ELISA
<b>Species Cross-Reactivity</b>	Human;Mouse;Rat
<b>Recommended dilutions</b>	Western Blot: 1/500 - 1/2000. Immunohistochemistry: 1/100 - 1/300. ELISA: 1/40000. Not yet tested in other applications.
<b>Immunogen</b>	The antiserum was produced against synthesized peptide derived from human POM121. AA range:1197-1246
<b>Specificity</b>	POM121 Polyclonal Antibody detects endogenous levels of POM121 protein.
<b>Formulation</b>	Liquid in PBS containing 50% glycerol, 0.5% BSA and 0.02% sodium azide..
<b>Storage</b>	Store at -20°C. Avoid repeated freeze-thaw cycles.
<b>Protein Name</b>	Nuclear envelope pore membrane protein POM 121
<b>Gene Name</b>	POM121
<b>Cellular localization</b>	Nucleus, nuclear pore complex . Nucleus membrane ; Single-pass membrane protein . Endoplasmic reticulum membrane ; Single-pass membrane protein . Stably associated with the NPC throughout interphase and the endoplasmic reticulum during metaphase. .
<b>Purification</b>	The antibody was affinity-purified from rabbit antiserum by affinity-chromatography using epitope-specific immunogen.

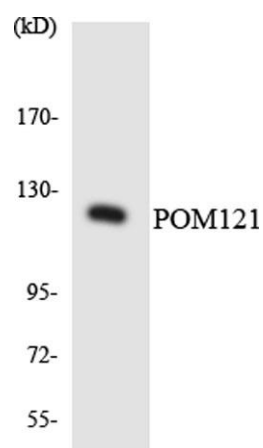
<b>Clonality</b>	Polyclonal
<b>Concentration</b>	1 mg/ml
<b>Observed band</b>	125kD
<b>Human Gene ID</b>	9883
<b>Human Swiss-Prot Number</b>	Q96HA1/A6NF01/A8CG34
<b>Alternative Names</b>	POM121; KIAA0618; NUP121; POM121A; Nuclear envelope pore membrane protein POM 121; Nuclear envelope pore membrane protein POM 121A; Nucleoporin Nup121; Pore membrane protein of 121 kDa; POM121B; Putative nuclear envelope pore membrane prote
<b>Background</b>	This gene encodes a transmembrane protein that localizes to the inner nuclear membrane and forms a core component of the nuclear pore complex, which mediates transport to and from the nucleus. The encoded protein may anchor this complex to the nuclear envelope. There are multiple related genes and pseudogenes for this gene on chromosomes 5, 7, 15, and 22. Alternatively spliced transcript variants encoding different isoforms have been observed. [provided by RefSeq, Jul 2013],



**Immunohistochemical analysis of paraffin-embedded Human brain. Antibody was diluted at 1:100(4° overnight). High-pressure and temperature Tris-EDTA,pH8.0 was used for antigen retrieval. Negative contrl (right) obtained from antibody was pre-absorbed by i**



Western blot analysis of lysates from K562 cells, using POM121 Antibody. The lane on the right is blocked with the synthesized peptide.



Western blot analysis of the lysates from HUVEC cells using POM121 antibody.