

**Cdc5L rabbit pAb****Cat#: orb770993 (Manual)**

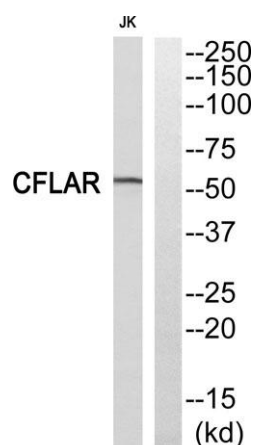
For research use only. Not intended for diagnostic use.

|                                 |   |
|---------------------------------|---|
| <b>Product Name</b>             | Cdc5L rabbit pAb  |
| <b>Host species</b>             | Rabbit  |
| <b>Applications</b>             | IHC;IF;ELISA  |
| <b>Species Cross-Reactivity</b> | Human;Mouse;Rat   |
| <b>Recommended dilutions</b>    | Immunohistochemistry: 1/100 - 1/300. ELISA: 1/5000. Not yet tested in other applications.                             |
| <b>Immunogen</b>                | The antiserum was produced against synthesized peptide derived from human CDC5L. AA range:721-770                     |
| <b>Specificity</b>              | Cdc5L Polyclonal Antibody detects endogenous levels of Cdc5L protein.   |
| <b>Formulation</b>              | Liquid in PBS containing 50% glycerol, 0.5% BSA and 0.02% sodium azide..  |
| <b>Storage</b>                  | Store at -20°C. Avoid repeated freeze-thaw cycles.  |
| <b>Protein Name</b>             | Cell division cycle 5-like protein  |
| <b>Gene Name</b>                | CDC5L   |
| <b>Cellular localization</b>    | Nucleus . Nucleus speckle . Cytoplasm . May shuttle between cytoplasm and nucleus. .                                  |
| <b>Purification</b>             | The antibody was affinity-purified from rabbit antiserum by affinity-chromatography using epitope-specific immunogen. |
| <b>Clonality</b>                | Polyclonal  |

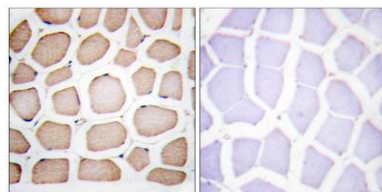
|                                |   |
|--------------------------------|---|
| <b>Concentration</b>           | 1 mg/ml   |
| <b>Observed band</b>           |   |
| <b>Human Gene ID</b>           | 988   |
| <b>Human Swiss-Prot Number</b> | Q99459  |
| <b>Alternative Names</b>       | CDC5L; KIAA0432; PCDC5RP; Cell division cycle 5-like protein; Cdc5-like protein; Pombe cdc5-related protein |

#### Background

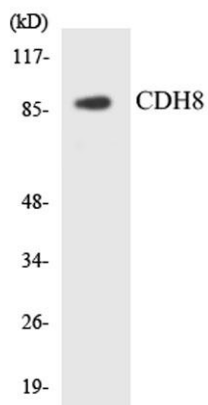
The protein encoded by this gene shares a significant similarity with *Schizosaccharomyces pombe* cdc5 gene product, which is a cell cycle regulator important for G2/M transition. This protein has been demonstrated to act as a positive regulator of cell cycle G2/M progression. It was also found to be an essential component of a non-snRNA spliceosome, which contains at least five additional protein factors and is required for the second catalytic step of pre-mRNA splicing. [provided by RefSeq, Jul 2008],



Western blot analysis of CDC5L Antibody. The lane on the right is blocked with the CDC5L peptide.



Immunohistochemistry analysis of paraffin-embedded human smooth muscle, using CDC5L Antibody. The lane on the right is blocked with the CDC5L peptide.



Western blot analysis of the lysates from HeLa cells using CDH8 antibody.