

MELK rabbit pAb

Cat#: orb770980 (Manual)

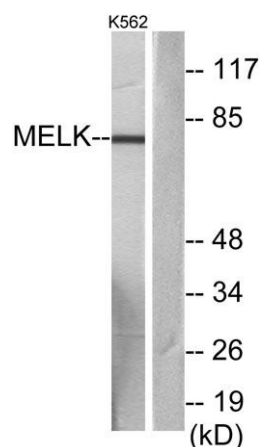
For research use only. Not intended for diagnostic use.

Product Name	MELK rabbit pAb
Host species	Rabbit
Applications	WB;IHC;IF;ELISA
Species Cross-Reactivity	Human;Rat;Mouse;
Recommended dilutions	Western Blot: 1/500 - 1/2000. Immunohistochemistry: 1/100 - 1/300. Immunofluorescence: 1/200 - 1/1000. ELISA: 1/10000. Not yet tested in other applications.
Immunogen	The antiserum was produced against synthesized peptide derived from human MELK. AA range:431-480
Specificity	MELK Polyclonal Antibody detects endogenous levels of MELK protein.
Formulation	Liquid in PBS containing 50% glycerol, 0.5% BSA and 0.02% sodium azide..
Storage	Store at -20°C. Avoid repeated freeze-thaw cycles.
Protein Name	Maternal embryonic leucine zipper kinase
Gene Name	MELK
Cellular localization	Cell membrane ; Peripheral membrane protein .
Purification	The antibody was affinity-purified from rabbit antiserum by affinity-chromatography using epitope-specific immunogen.
Clonality	Polyclonal

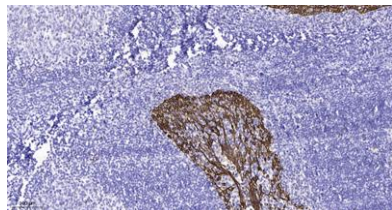
Concentration	1 mg/ml
Observed band	75kD
Human Gene ID	9833
Human Swiss-Prot Number	Q14680
Alternative Names	MELK; KIAA0175; Maternal embryonic leucine zipper kinase; hMELK; Protein kinase Eg3; pEg3 kinase; Protein kinase PK38; hPK38; Tyrosine-protein kinase MELK

Background

catalytic activity:ATP + a protein = ADP + a phosphoprotein.,function:Phosphorylates ZNF622 and may contribute to its redirection to the nucleus. May be involved in the inhibition of spliceosome assembly during mitosis.,PTM:Autophosphorylated. Thr-478 phosphorylation during mitosis promotes interaction with PPP1R8.,similarity:Belongs to the protein kinase superfamily.,similarity:Belongs to the protein kinase superfamily. CAMK Ser/Thr protein kinase family. SNF1 subfamily.,similarity:Contains 1 KA1 (kinase-associated) domain.,similarity:Contains 1 protein kinase domain.,subunit:Interacts with ZNF622 and PPP1R8.,tissue specificity:Expressed in placenta, kidney, thymus, testis, ovary and intestine.,



Western blot analysis of lysates from K562 cells, using MELK Antibody. The lane on the right is blocked with the synthesized peptide.



Immunohistochemical analysis of paraffin-embedded human tonsil. 1, Antibody was diluted at 1:200(4° overnight). 2, Tris-EDTA,pH9.0 was used for antigen retrieval. 3,Secondary antibody was diluted at 1:200(room temperature, 45min).