

Repac rabbit pAb

Cat#: orb770974 (Manual)

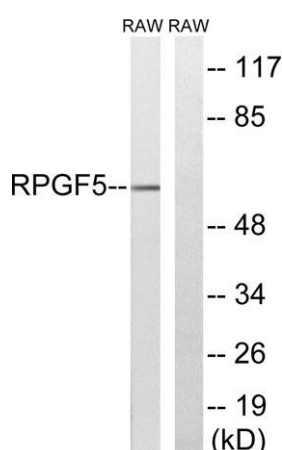
For research use only. Not intended for diagnostic use.

Product Name	Repac rabbit pAb
Host species	Rabbit
Applications	WB;IHC
Species Cross-Reactivity	Human;Mouse;Rat
Recommended dilutions	WB 1:500-2000;IHC-p 1:50-300
Immunogen	The antiserum was produced against synthesized peptide derived from human RAPGEF5. AA range:431-480
Specificity	Repac Polyclonal Antibody detects endogenous levels of Repac protein.
Formulation	Liquid in PBS containing 50% glycerol, 0.5% BSA and 0.02% sodium azide..
Storage	Store at -20°C. Avoid repeated freeze-thaw cycles.
Protein Name	Rap guanine nucleotide exchange factor 5
Gene Name	RAPGEF5
Cellular localization	Nucleus.
Purification	The antibody was affinity-purified from rabbit antiserum by affinity-chromatography using epitope-specific immunogen.
Clonality	Polyclonal

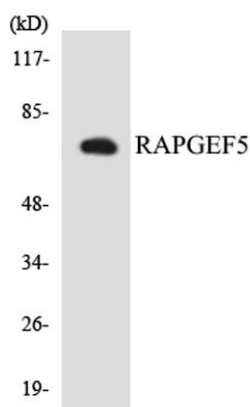
Concentration	1 mg/ml
Observed band	60kD
Human Gene ID	9771
Human Swiss-Prot Number	Q92565
Alternative Names	RAPGEF5; GFR; KIAA0277; MRGEF; Rap guanine nucleotide exchange factor 5; Guanine nucleotide exchange factor for Rap1; M-Ras-regulated Rap GEF; MR-GEF; Related to Epac; Repac

Background

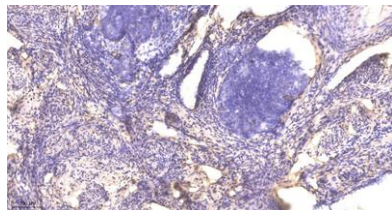
Members of the RAS (see HRAS; MIM 190020) subfamily of GTPases function in signal transduction as GTP/GDP-regulated switches that cycle between inactive GDP- and active GTP-bound states. Guanine nucleotide exchange factors (GEFs), such as RAPGEF5, serve as RAS activators by promoting acquisition of GTP to maintain the active GTP-bound state and are the key link between cell surface receptors and RAS activation (Rebhun et al., 2000 [PubMed 10934204]).[supplied by OMIM, Mar 2008],



Western blot analysis of lysates from RAW264.7 cells, using RAPGEF5 Antibody. The lane on the right is blocked with the synthesized peptide.



Western blot analysis of the lysates from COLO205 cells using RAPGEF5 antibody.



Immunohistochemical analysis of paraffin-embedded human cervical carcinoma. 1, Antibody was diluted at 1:200(4^o overnight). 2, Tris-EDTA,pH9.0 was used for antigen retrieval. 3,Secondary antibody was diluted at 1:200(room temperature, 45min).