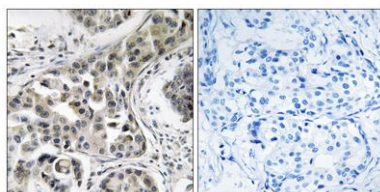


**RN-tre rabbit pAb****Cat#: orb770964 (Manual)**

For research use only. Not intended for diagnostic use.

<b>Product Name</b>	RN-tre rabbit pAb
<b>Host species</b>	Rabbit
<b>Applications</b>	IHC;IF;ELISA
<b>Species Cross-Reactivity</b>	Human;Rat;Mouse;
<b>Recommended dilutions</b>	Immunohistochemistry: 1/100 - 1/300. ELISA: 1/10000. Not yet tested in other applications.
<b>Immunogen</b>	The antiserum was produced against synthesized peptide derived from human USP6NL. AA range:451-500
<b>Specificity</b>	RN-tre Polyclonal Antibody detects endogenous levels of RN-tre protein.
<b>Formulation</b>	Liquid in PBS containing 50% glycerol, 0.5% BSA and 0.02% sodium azide..
<b>Storage</b>	Store at -20°C. Avoid repeated freeze-thaw cycles.
<b>Protein Name</b>	USP6 N-terminal-like protein
<b>Gene Name</b>	USP6NL
<b>Cellular localization</b>	Golgi apparatus. Cytoplasmic vesicle.
<b>Purification</b>	The antibody was affinity-purified from rabbit antiserum by affinity-chromatography using epitope-specific immunogen.
<b>Clonality</b>	Polyclonal

<b>Concentration</b>	1 mg/ml
<b>Observed band</b>	
<b>Human Gene ID</b>	9712
<b>Human Swiss-Prot Number</b>	Q92738
<b>Alternative Names</b>	USP6NL; KIAA0019; USP6 N-terminal-like protein; Related to the N-terminus of tre; RN-tre
<b>Background</b>	function:Acts as a GTPase-activating protein for RAB5A. Involved in receptor trafficking. In complex with EPS8 inhibits internalization of EGFR.,PTM:Phosphorylated upon DNA damage, probably by ATM or ATR.,similarity:Contains 1 Rab-GAP TBC domain.,subunit:Interacts with EPS8.,tissue specificity:Widely expressed.,



**Immunohistochemistry analysis of paraffin-embedded human breast carcinoma, using USP6NL Antibody. The picture on the right is blocked with the synthesized peptide.**