

**eIF5B rabbit pAb****Cat#: orb770959 (Manual)**

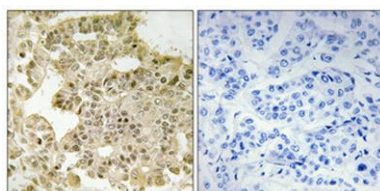
For research use only. Not intended for diagnostic use.

<b>Product Name</b>	eIF5B rabbit pAb
<b>Host species</b>	Rabbit
<b>Applications</b>	WB;IHC;IF;ELISA
<b>Species Cross-Reactivity</b>	Human;Mouse;Rat
<b>Recommended dilutions</b>	Western Blot: 1/500 - 1/2000. Immunohistochemistry: 1/100 - 1/300. ELISA: 1/40000. Not yet tested in other applications.
<b>Immunogen</b>	The antiserum was produced against synthesized peptide derived from human EIF5B. AA range:1051-1100
<b>Specificity</b>	eIF5B Polyclonal Antibody detects endogenous levels of eIF5B protein.
<b>Formulation</b>	Liquid in PBS containing 50% glycerol, 0.5% BSA and 0.02% sodium azide..
<b>Storage</b>	Store at -20°C. Avoid repeated freeze-thaw cycles.
<b>Protein Name</b>	Eukaryotic translation initiation factor 5B
<b>Gene Name</b>	EIF5B
<b>Cellular localization</b>	Cytoplasm .
<b>Purification</b>	The antibody was affinity-purified from rabbit antiserum by affinity-chromatography using epitope-specific immunogen.
<b>Clonality</b>	Polyclonal

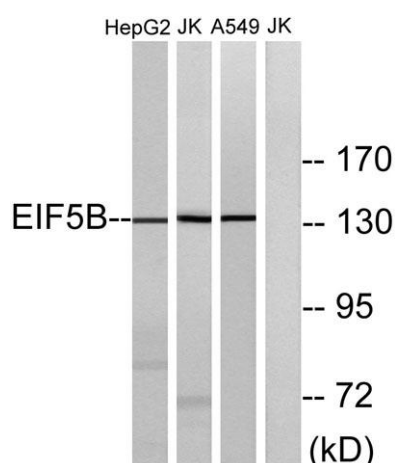
<b>Concentration</b>	1 mg/ml
<b>Observed band</b>	139kD
<b>Human Gene ID</b>	9669
<b>Human Swiss-Prot Number</b>	O60841
<b>Alternative Names</b>	EIF5B; IF2; KIAA0741; Eukaryotic translation initiation factor 5B; eIF-5B; Translation initiation factor IF-2

### Background

Accurate initiation of translation in eukaryotes is complex and requires many factors, some of which are composed of multiple subunits. The process is simpler in prokaryotes which have only three initiation factors (IF1, IF2, IF3). Two of these factors are conserved in eukaryotes: the homolog of IF1 is eIF1A and the homolog of IF2 is eIF5B. This gene encodes eIF5B. Factors eIF1A and eIF5B interact on the ribosome along with other initiation factors and GTP to position the initiation methionine tRNA on the start codon of the mRNA so that translation initiates accurately. [provided by RefSeq, Jul 2008],



**Immunohistochemical analysis of paraffin-embedded Human breast cancer. Antibody was diluted at 1:100(4° overnight). High-pressure and temperature Tris-EDTA,pH8.0 was used for antigen retrieval. Negative contrl (right) obtained from antibody was pre-absor**



**Western blot analysis of lysates from Jurkat, HepG2, and A549 cells, using EIF5B Antibody. The lane on the right is blocked with the synthesized peptide.**



Explore. Bioreagents.

[www.biorbyt.com](http://www.biorbyt.com)

Biorbyt Ltd  
7 Signet Court, Swann Road, Cambridge, CB5 8LA. United Kingdom  
Email: [info@biorbyt.com](mailto:info@biorbyt.com) | Phone: +44 (0)1223 859-353 | Fax: +44 (0)1223 280-240

Biorbyt LLC  
68 TW Alexander Drive, Durham, NC 27709. United States  
Email: [info@biorbyt.com](mailto:info@biorbyt.com) | Phone: +1 (415) 906-5211 | Fax: +1 (415) 651-8558