

**CEP135 rabbit pAb****Cat#: orb770957 (Manual)**

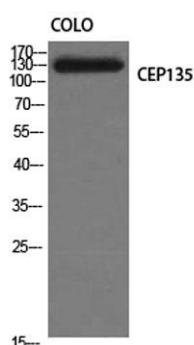
For research use only. Not intended for diagnostic use.

<b>Product Name</b>	CEP135 rabbit pAb
<b>Host species</b>	Rabbit
<b>Applications</b>	WB;IHC;IF;ELISA
<b>Species Cross-Reactivity</b>	Human;Mouse
<b>Recommended dilutions</b>	Western Blot: 1/500 - 1/2000. Immunohistochemistry: 1/100 - 1/300. ELISA: 1/40000. Not yet tested in other applications.
<b>Immunogen</b>	The antiserum was produced against synthesized peptide derived from human CEP135. AA range:1081-1130
<b>Specificity</b>	CEP135 Polyclonal Antibody detects endogenous levels of CEP135 protein.
<b>Formulation</b>	Liquid in PBS containing 50% glycerol, 0.5% BSA and 0.02% sodium azide..
<b>Storage</b>	Store at -20°C. Avoid repeated freeze-thaw cycles.
<b>Protein Name</b>	Centrosomal protein of 135 kDa
<b>Gene Name</b>	CEP135
<b>Cellular localization</b>	Cytoplasm, cytoskeleton, microtubule organizing center, centrosome, centriole . During centriole biogenesis, it is concentrated within the proximal lumen of both parental centrioles and procentrioles.
<b>Purification</b>	The antibody was affinity-purified from rabbit antiserum by affinity-chromatography using epitope-specific immunogen.

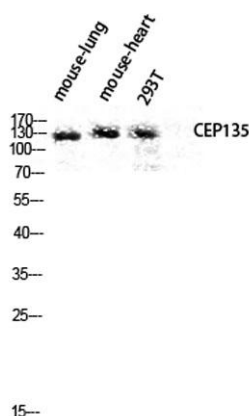
<b>Clonality</b>	Polyclonal
<b>Concentration</b>	1 mg/ml
<b>Observed band</b>	134kD
<b>Human Gene ID</b>	9662
<b>Human Swiss-Prot Number</b>	Q66GS9
<b>Alternative Names</b>	CEP135; CEP4; KIAA0635; Centrosomal protein of 135 kDa; Cep135; Centrosomal protein 4

## Background

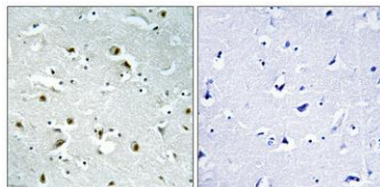
centrosomal protein 135(CEP135) Homo sapiens This gene encodes a centrosomal protein, which acts as a scaffolding protein during early centriole biogenesis, and is also required for centriole-centriole cohesion during interphase. Mutations in this gene are associated with autosomal recessive primary microcephaly-8. [provided by RefSeq, Jun 2012],



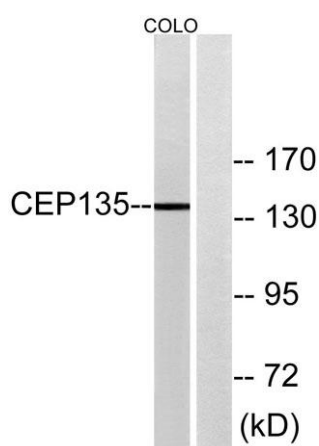
**Western Blot analysis of COLO cells using CEP135 Polyclonal Antibody diluted at 1:1000**



**Western blot analysis of mouse-lung mouse-heart 293T lysis using CEP135 antibody. Antibody was diluted at 1:1000**



**Immunohistochemical analysis of paraffin-embedded Human brain. Antibody was diluted at 1:100(4° overnight). High-pressure and temperature Tris-EDTA,pH8.0 was used for antigen retrieval. Negative contrl (right) obtained from antibody was pre-absorbed by immunogen peptide.**



**Western blot analysis of lysates from COLO cells, using CEP135 Antibody. The lane on the right is blocked with the synthesized peptide.**