

CDHF9 rabbit pAb**Cat#: orb770952 (Manual)**

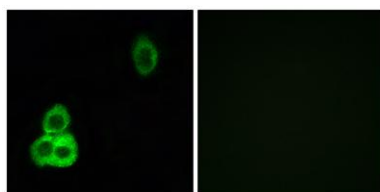
For research use only. Not intended for diagnostic use.

Product Name	CDHF9 rabbit pAb
Host species	Rabbit
Applications	IF;ELISA
Species Cross-Reactivity	Human;Mouse;Rat
Recommended dilutions	Immunofluorescence: 1/200 - 1/1000. ELISA: 1/10000. Not yet tested in other applications.
Immunogen	The antiserum was produced against synthesized peptide derived from human CELSR1. AA range:921-970
Specificity	CDHF9 Polyclonal Antibody detects endogenous levels of CDHF9 protein.
Formulation	Liquid in PBS containing 50% glycerol, 0.5% BSA and 0.02% sodium azide..
Storage	Store at -20°C. Avoid repeated freeze-thaw cycles.
Protein Name	Cadherin EGF LAG seven-pass G-type receptor 1
Gene Name	CELSR1
Cellular localization	Cell membrane; Multi-pass membrane protein.
Purification	The antibody was affinity-purified from rabbit antiserum by affinity-chromatography using epitope-specific immunogen.
Clonality	Polyclonal

Concentration	1 mg/ml
Observed band	
Human Gene ID	9620
Human Swiss-Prot Number	Q9NYQ6
Alternative Names	CELSR1; CDHF9; FMI2; Cadherin EGF LAG seven-pass G-type receptor 1; Cadherin family member 9; Flamingo homolog 2; hFmi2

Background

The protein encoded by this gene is a member of the flamingo subfamily, part of the cadherin superfamily. The flamingo subfamily consists of nonclassic-type cadherins; a subpopulation that does not interact with catenins. The flamingo cadherins are located at the plasma membrane and have nine cadherin domains, seven epidermal growth factor-like repeats and two laminin A G-type repeats in their ectodomain. They also have seven transmembrane domains, a characteristic unique to this subfamily. It is postulated that these proteins are receptors involved in contact-mediated communication, with cadherin domains acting as homophilic binding regions and the EGF-like domains involved in cell adhesion and receptor-ligand interactions. This particular member is a developmentally regulated, neural-specific gene which plays an unspecified role in early embryogenesis. [provided by RefSeq,



Immunofluorescence analysis of HepG2 cells, using CELSR1 Antibody. The picture on the right is blocked with the synthesized peptide.