

## MPP1 rabbit pAb

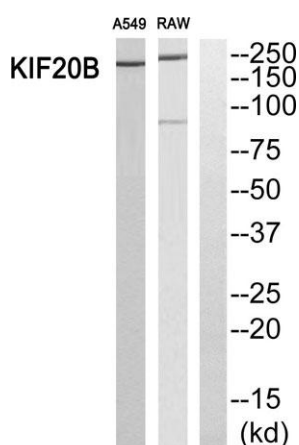
**Cat#: orb770943 (Manual)**

For research use only. Not intended for diagnostic use.

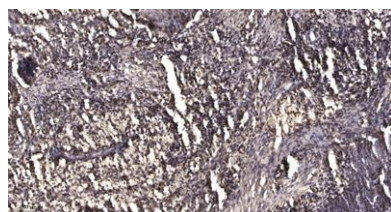
|                                 |   |
|---------------------------------|---|
| <b>Product Name</b>             | MPP1 rabbit pAb   |
| <b>Host species</b>             | Rabbit  |
| <b>Applications</b>             | IF;ELISA;IHC  |
| <b>Species Cross-Reactivity</b> | Human;Rat;Mouse;  |
| <b>Recommended dilutions</b>    | IF/ICC 1:50-300; ELISA 1:2000-20000; IHC-p 1:50-200   |
| <b>Immunogen</b>                | The antiserum was produced against synthesized peptide derived from human KIF20B. AA range:1771-1820  |
| <b>Specificity</b>              | MPP1 Polyclonal Antibody detects endogenous levels of MPP1 protein.   |
| <b>Formulation</b>              | Liquid in PBS containing 50% glycerol, 0.5% BSA and 0.02% sodium azide..  |
| <b>Storage</b>                  | Store at -20°C. Avoid repeated freeze-thaw cycles.  |
| <b>Protein Name</b>             | Kinesin-like protein KIF20B   |
| <b>Gene Name</b>                | KIF20B  |
| <b>Cellular localization</b>    | Nucleus . Cytoplasm, cytoskeleton, microtubule organizing center, centrosome . Nucleus, nucleolus . Nucleus, nucleoplasm . Cytoplasm, cytoskeleton, spindle . Cytoplasm, cytoskeleton, spindle pole . Midbody . Cell projection, axon . Cell projection, growth |
| <b>Purification</b>             | The antibody was affinity-purified from rabbit antiserum by affinity-chromatography using epitope-specific immunogen.   |

|                                |   |
|--------------------------------|---|
| <b>Clonality</b>               | Polyclonal  |
| <b>Concentration</b>           | 1 mg/ml   |
| <b>Observed band</b>           | 210kD   |
| <b>Human Gene ID</b>           | 9585  |
| <b>Human Swiss-Prot Number</b> | Q96Q89  |
| <b>Alternative Names</b>       | KIF20B; KRMP1; MPHOSPH1; Kinesin-like protein KIF20B; Cancer/testis antigen 90; CT90; Kinesin-related motor interacting with PIN1; M-phase phosphoprotein 1; MPP1 |

**Background** KIF20B (Kinesin Family Member 20B) is a Protein Coding gene. Among its related pathways are Golgi-to-ER retrograde transport and Factors involved in megakaryocyte development and platelet production. GO annotations related to this gene include ATPase activity and microtubule motor activity. An important paralog of this gene is KIF23.



**Western blot analysis of KIF20B Antibody.** The lane on the right is blocked with the KIF20B peptide.



**Immunohistochemical analysis of paraffin-embedded human Squamous cell carcinoma of lung.** 1, Antibody was diluted at 1:200(4° overnight). 2, Tris-EDTA,pH9.0 was used for antigen retrieval. 3,Secondary antibody was diluted at 1:200(room temperature, 45min).



Explore. Bioreagents.

[www.biorbyt.com](http://www.biorbyt.com)