

**CEP41 rabbit pAb****Cat#: orb770939 (Manual)**

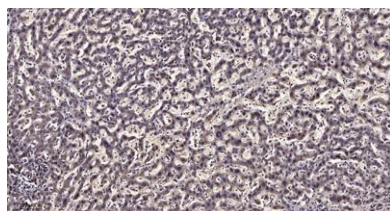
For research use only. Not intended for diagnostic use.

<b>Product Name</b>	CEP41 rabbit pAb
<b>Host species</b>	Rabbit
<b>Applications</b>	IHC;IF;ELISA
<b>Species Cross-Reactivity</b>	Human;Rat;Mouse;
<b>Recommended dilutions</b>	Immunohistochemistry: 1/100 - 1/300. ELISA: 1/40000. Not yet tested in other applications.
<b>Immunogen</b>	The antiserum was produced against synthesized peptide derived from human CEP41. AA range:150-200
<b>Specificity</b>	CEP41 Polyclonal Antibody detects endogenous levels of CEP41 protein.
<b>Formulation</b>	Liquid in PBS containing 50% glycerol, 0.5% BSA and 0.02% sodium azide..
<b>Storage</b>	Store at -20°C. Avoid repeated freeze-thaw cycles.
<b>Protein Name</b>	Centrosomal protein of 41 kDa
<b>Gene Name</b>	CEP41
<b>Cellular localization</b>	Cytoplasm, cytoskeleton, microtubule organizing center, centrosome . Cell projection, cilium. Cytoplasm, cytoskeleton, cilium basal body. Localizes mainly to the cilium basal body and in primary cilia.
<b>Purification</b>	The antibody was affinity-purified from rabbit antiserum by affinity-chromatography using epitope-specific immunogen.

<b>Clonality</b>	Polyclonal
<b>Concentration</b>	1 mg/ml
<b>Observed band</b>	41kD
<b>Human Gene ID</b>	95681
<b>Human Swiss-Prot Number</b>	Q9BYV8
<b>Alternative Names</b>	CEP41; TSGA14; Centrosomal protein of 41 kDa; Cep41; Testis-specific gene A14 protein

### Background

This gene encodes a centrosomal and microtubule-binding protein which is predicted to have two coiled-coil domains and a rhodanese domain. In human retinal pigment epithelial cells the protein localized to centrioles and cilia. Mutations in this gene have been associated with Joubert Syndrome 15; an autosomal recessive ciliopathy and neurological disorder. Alternative splicing results in multiple transcript variants. [provided by RefSeq, Mar 2012],



**Immunohistochemical analysis of paraffin-embedded human liver cancer. 1, Antibody was diluted at 1:200(4° overnight). 2, Tris-EDTA,pH9.0 was used for antigen retrieval. 3,Secondary antibody was diluted at 1:200(room temperature, 45min).**