

ATP5J2 rabbit pAb**Cat#: orb770932 (Manual)**

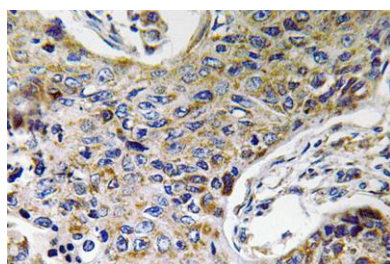
For research use only. Not intended for diagnostic use.

Product Name	ATP5J2 rabbit pAb
Host species	Rabbit
Applications	IHC;IF;ELISA
Species Cross-Reactivity	Human;Rat;Mouse;
Recommended dilutions	Immunohistochemistry: 1/100 - 1/300. ELISA: 1/5000. Not yet tested in other applications.
Immunogen	The antiserum was produced against synthesized peptide derived from human ATP5J2. AA range:21-70
Specificity	ATP5J2 Polyclonal Antibody detects endogenous levels of ATP5J2 protein.
Formulation	Liquid in PBS containing 50% glycerol, 0.5% BSA and 0.02% sodium azide..
Storage	Store at -20°C. Avoid repeated freeze-thaw cycles.
Protein Name	ATP5J2
Gene Name	ATP5J2
Cellular localization	
Purification	The antibody was affinity-purified from rabbit antiserum by affinity-chromatography using epitope-specific immunogen.
Clonality	Polyclonal

Concentration	1 mg/ml
Observed band	
Human Gene ID	9551
Human Swiss-Prot Number	A6ND55
Alternative Names	ATP synthase f chain mitochondrial; ATP5JL; ATPK

Background

Mitochondrial ATP synthase catalyzes ATP synthesis, utilizing an electrochemical gradient of protons across the inner membrane during oxidative phosphorylation. It is composed of two linked multi-subunit complexes: the soluble catalytic core, F₁, and the membrane-spanning component, F_o, which comprises the proton channel. The catalytic portion of mitochondrial ATP synthase consists of five different subunits (alpha, beta, gamma, delta, and epsilon) assembled with a stoichiometry of 3 alpha, 3 beta, and single representatives of the gamma, delta, and epsilon subunits. The proton channel likely has nine subunits (a, b, c, d, e, f, g, F6 and 8). ATP5J2 (ATP synthase, H⁺ transporting, mitochondrial F_o complex subunit F2) encodes the f subunit of the F_o complex. Alternatively spliced transcript variants encoding different isoforms have been identified for ATP5J2. ATP5J2 has multiple pseudogenes. Naturally occurring read-through transcription also exists between ATP5J2 and the downstream pentatricopeptide repeat domain 1 (PTCD1) gene.



Immunohistochemistry analysis of ATP5J2 antibody in paraffin-embedded human lung carcinoma tissue.