

## X11 $\gamma$ rabbit pAb

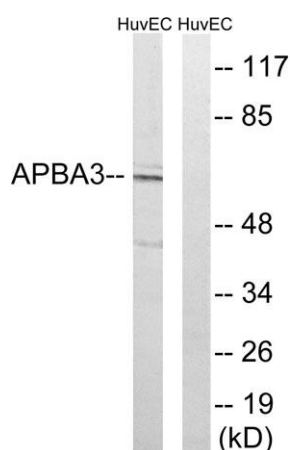
**Cat#: orb770931 (Manual)**

For research use only. Not intended for diagnostic use.

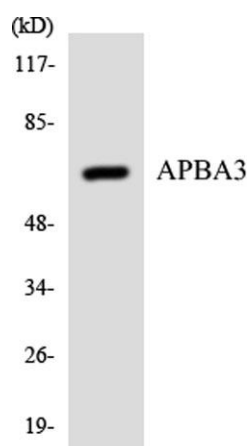
<b>Product Name</b>	X11 $\gamma$ rabbit pAb
<b>Host species</b>	Rabbit
<b>Applications</b>	WB;IHC;IF;ELISA
<b>Species Cross-Reactivity</b>	Human;Rat;Mouse;
<b>Recommended dilutions</b>	Western Blot: 1/500 - 1/2000. Immunohistochemistry: 1/100 - 1/300. ELISA: 1/40000. Not yet tested in other applications.
<b>Immunogen</b>	The antiserum was produced against synthesized peptide derived from human APBA3. AA range:361-410
<b>Specificity</b>	X11 $\gamma$ Polyclonal Antibody detects endogenous levels of X11 $\gamma$ protein.
<b>Formulation</b>	Liquid in PBS containing 50% glycerol, 0.5% BSA and 0.02% sodium azide..
<b>Storage</b>	Store at -20°C. Avoid repeated freeze-thaw cycles.
<b>Protein Name</b>	Amyloid beta A4 precursor protein-binding family A member 3
<b>Gene Name</b>	APBA3
<b>Cellular localization</b>	Cytoplasm, perinuclear region .
<b>Purification</b>	The antibody was affinity-purified from rabbit antiserum by affinity-chromatography using epitope-specific immunogen.
<b>Clonality</b>	Polyclonal

<b>Concentration</b>	1 mg/ml
<b>Observed band</b>	61kD
<b>Human Gene ID</b>	9546
<b>Human Swiss-Prot Number</b>	O96018
<b>Alternative Names</b>	APBA3; MINT3; X11L2; Amyloid beta A4 precursor protein-binding family A member 3; Adapter protein X11gamma; Neuron-specific X11L2 protein; Neuronal Munc18-1-interacting protein 3; Mint-3

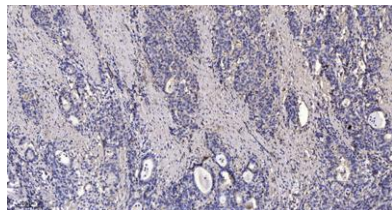
**Background** amyloid beta precursor protein binding family A member 3 (APBA3) Homo sapiens The protein encoded by this gene is a member of the X11 protein family. It is an adapter protein that interacts with the Alzheimer's disease amyloid precursor protein. This gene product is believed to be involved in signal transduction processes. This gene is a candidate gene for Alzheimer's disease. [provided by RefSeq, Jul 2008],



Western blot analysis of lysates from HUVEC cells, using APBA3 Antibody. The lane on the right is blocked with the synthesized peptide.



Western blot analysis of the lysates from COLO205 cells using APBA3 antibody.



**Immunohistochemical analysis of paraffin-embedded human Gastric adenocarcinoma. 1, Antibody was diluted at 1:200(4° overnight). 2, Tris-EDTA,pH9.0 was used for antigen retrieval. 3,Secondary antibody was diluted at 1:200(room temperature, 45min).**