

RPA40 rabbit pAb**Cat#: orb770930 (Manual)**

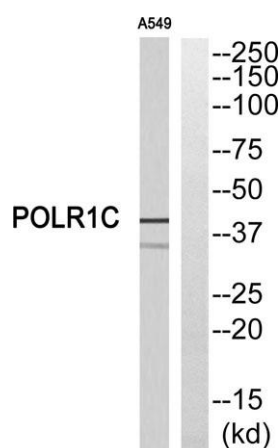
For research use only. Not intended for diagnostic use.

Product Name	RPA40 rabbit pAb
Host species	Rabbit
Applications	WB;ELISA
Species Cross-Reactivity	Human;Mouse
Recommended dilutions	Western Blot: 1/500 - 1/2000. ELISA: 1/40000. Not yet tested in other applications.
Immunogen	The antiserum was produced against synthesized peptide derived from human POLR1C. AA range:101-150
Specificity	RPA40 Polyclonal Antibody detects endogenous levels of RPA40 protein.
Formulation	Liquid in PBS containing 50% glycerol, 0.5% BSA and 0.02% sodium azide..
Storage	Store at -20°C. Avoid repeated freeze-thaw cycles.
Protein Name	DNA-directed RNA polymerases I and III subunit RPAC1
Gene Name	POLR1C
Cellular localization	Nucleus .
Purification	The antibody was affinity-purified from rabbit antiserum by affinity-chromatography using epitope-specific immunogen.
Clonality	Polyclonal

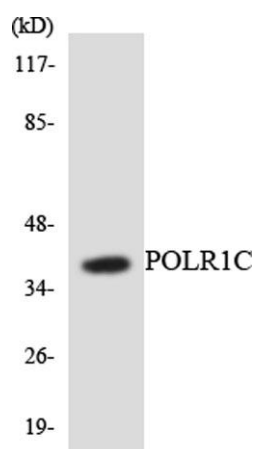
Concentration	1 mg/ml
Observed band	39kD
Human Gene ID	9533
Human Swiss-Prot Number	O15160
Alternative Names	POLR1C; POLR1E; DNA-directed RNA polymerases I and III subunit RPAC1; DNA-directed RNA polymerase I subunit C; RNA polymerases I and III subunit AC1; AC40; DNA-directed RNA polymerases I and III 40 kDa polypeptide; RPA40; RPA39; RPC40

Background

The protein encoded by this gene is a subunit of both RNA polymerase I and RNA polymerase III complexes. The encoded protein is part of the Pol core element. Mutations in this gene have been associated with Treacher Collins syndrome (TCS) and hypomyelinating leukodystrophy 11. Alternative splicing results in multiple transcript variants. [provided by RefSeq, Jan 2016],



Western blot analysis of POLR1C Antibody. The lane on the right is blocked with the POLR1C peptide.



Western blot analysis of the lysates from HepG2 cells using POLR1C antibody.