

GPSN2 rabbit pAb**Cat#: orb770926 (Manual)**

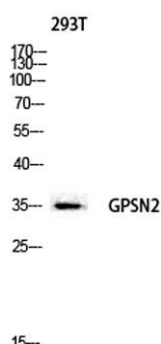
For research use only. Not intended for diagnostic use.

Product Name	GPSN2 rabbit pAb
Host species	Rabbit
Applications	WB;IHC;IF;ELISA
Species Cross-Reactivity	Human;Mouse;Rat
Recommended dilutions	Immunohistochemistry: 1/100 - 1/300. ELISA: 1/40000. Not yet tested in other applications.
Immunogen	The antiserum was produced against synthesized peptide derived from human GPSN2. AA range:259-308
Specificity	GPSN2 Polyclonal Antibody detects endogenous levels of GPSN2 protein.
Formulation	Liquid in PBS containing 50% glycerol, 0.5% BSA and 0.02% sodium azide..
Storage	Store at -20°C. Avoid repeated freeze-thaw cycles.
Protein Name	Trans-2,3-enoyl-CoA reductase
Gene Name	TECR
Cellular localization	Endoplasmic reticulum membrane ; Multi-pass membrane protein .
Purification	The antibody was affinity-purified from rabbit antiserum by affinity-chromatography using epitope-specific immunogen.
Clonality	Polyclonal

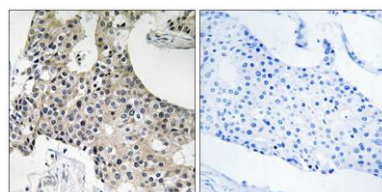
Concentration	1 mg/ml
Observed band	
Human Gene ID	9524
Human Swiss-Prot Number	Q9NZ01
Alternative Names	TECR; GPSN2; SC2; Trans-2; 3-enoyl-CoA reductase; TER; Synaptic glycoprotein SC2

Background

This gene encodes a multi-pass membrane protein that resides in the endoplasmic reticulum, and belongs to the steroid 5-alpha reductase family. The elongation of microsomal long and very long chain fatty acid consists of 4 sequential reactions. This protein catalyzes the final step, reducing trans-2,3-enoyl-CoA to saturated acyl-CoA. Alternatively spliced transcript variants have been found for this gene.[provided by RefSeq, Apr 2011],



Western blot analysis of 293T lysis using GPSN2 antibody. Antibody was diluted at 1:2000



Immunohistochemistry analysis of paraffin-embedded human breast carcinoma tissue, using GPSN2 Antibody. The picture on the right is blocked with the synthesized peptide.