

Neurexin I rabbit pAb

Cat#: orb770905 (Manual)

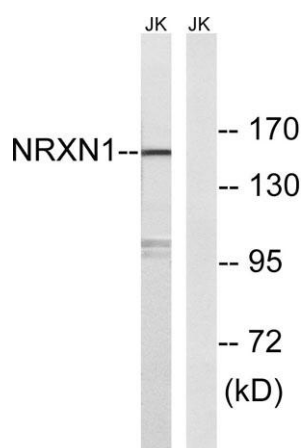
For research use only. Not intended for diagnostic use.

Product Name	Neurexin I rabbit pAb
Host species	Rabbit
Applications	WB;IHC
Species Cross-Reactivity	Human;Mouse;Rat
Recommended dilutions	WB 1:500-2000;IHC-p 1:50-300
Immunogen	The antiserum was produced against synthesized peptide derived from human NRXN1. AA range:502-551
Specificity	Neurexin I Polyclonal Antibody detects endogenous levels of Neurexin I protein.
Formulation	Liquid in PBS containing 50% glycerol, 0.5% BSA and 0.02% sodium azide..
Storage	Store at -20°C. Avoid repeated freeze-thaw cycles.
Protein Name	Neurexin-1-alpha
Gene Name	NRXN1
Cellular localization	Cell junction, synapse, presynaptic cell membrane ; Single-pass type I membrane protein .
Purification	The antibody was affinity-purified from rabbit antiserum by affinity-chromatography using epitope-specific immunogen.
Clonality	Polyclonal

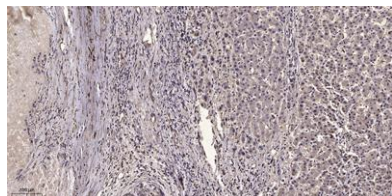
Concentration	1 mg/ml
Observed band	150kD
Human Gene ID	9378
Human Swiss-Prot Number	Q9ULB1
Alternative Names	NRXN1; KIAA0578; Neurexin-1-alpha; Neurexin I-alpha

Background

NRXN1 (neurexin 1) encodes a single-pass type I membrane protein that belongs to the neurexin family. Neurexins are cell-surface receptors that bind neuroligins to form Ca^{2+} -dependent neurexin/neuroligin complexes at synapses in the central nervous system. This complex is required for efficient neurotransmission and is involved in the formation of synaptic contacts. Three members of this gene family have been studied in detail and are estimated to generate over 3000 variants through the use of two alternative promoters (alpha and beta) and extensive alternative splicing in each family member. Recently, a third promoter (gamma) was identified for NRXN1 in the 3' region. Mutations in NRXN1 are associated with Pitt-Hopkins-like syndrome-2 and may contribute to susceptibility to schizophrenia.



Western blot analysis of lysates from Jurkat cells, using NRXN1 Antibody. The lane on the right is blocked with the synthesized peptide.



Immunohistochemical analysis of paraffin-embedded human liver cancer. 1, Antibody was diluted at 1:200(4° overnight). 2, Tris-EDTA,pH9.0 was used for antigen retrieval. 3,Secondary antibody was diluted at 1:200(room temperature, 45min).