

Neurexin III β rabbit pAb

Cat#: orb770903 (Manual)

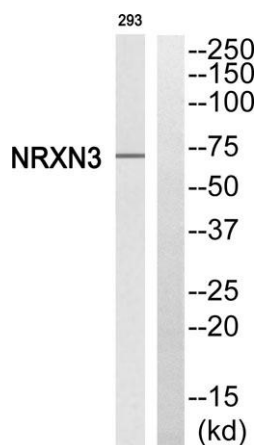
For research use only. Not intended for diagnostic use.

Product Name	Neurexin III β rabbit pAb
Host species	Rabbit
Applications	WB;ELISA;IHC
Species Cross-Reactivity	Human;Rat;Mouse;
Recommended dilutions	WB 1:500-2000;IHC-p 1:50-300; ELISA 2000-20000
Immunogen	Synthesized peptide derived from Neurexin III β . at AA range: 30-110
Specificity	Neurexin III β Polyclonal Antibody detects endogenous levels of Neurexin III β protein.
Formulation	Liquid in PBS containing 50% glycerol, 0.5% BSA and 0.02% sodium azide..
Storage	Store at -20°C. Avoid repeated freeze-thaw cycles.
Protein Name	Neurexin-3-beta
Gene Name	NRXN3
Cellular localization	Membrane ; Single-pass type I membrane protein .
Purification	The antibody was affinity-purified from rabbit antiserum by affinity-chromatography using epitope-specific immunogen.
Clonality	Polyclonal

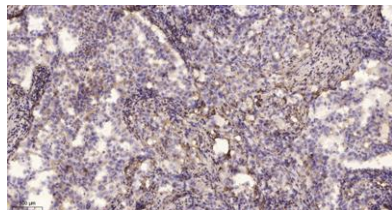
Concentration	1 mg/ml
Observed band	70kD
Human Gene ID	9369
Human Swiss-Prot Number	Q9HDB5
Alternative Names	NRXN3; KIAA0743; Neurexin-3-beta; Neurexin III-beta

Background

NRXN3 (neurexin 3) encodes a member of a family of proteins that function in the nervous system as receptors and cell adhesion molecules. Extensive alternative splicing and the use of alternative promoters results in multiple transcript variants and protein isoforms for this gene, but the full-length nature of many of these variants has not been determined. Transcripts that initiate from an upstream promoter encode alpha isoforms, which contain epidermal growth factor-like (EGF-like) sequences and laminin G domains. Transcripts initiating from the downstream promoter encode beta isoforms, which lack EGF-like sequences. Genetic variation at this locus has been associated with a range of behavioral phenotypes, including alcohol dependence and autism spectrum disorder.



Western blot analysis of NRXN3 Antibody. The lane on the right is blocked with the NRXN3 peptide.



Immunohistochemical analysis of paraffin-embedded human lung cancer. 1, Antibody was diluted at 1:200(4° overnight). 2, Tris-EDTA,pH9.0 was used for antigen retrieval. 3,Secondary antibody was diluted at 1:200(room temperature, 45min).