

**TFIIIC90 rabbit pAb****Cat#: orb770897 (Manual)**

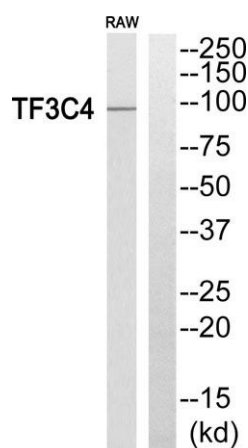
For research use only. Not intended for diagnostic use.

<b>Product Name</b>	TFIIIC90 rabbit pAb
<b>Host species</b>	Rabbit
<b>Applications</b>	WB;ELISA
<b>Species Cross-Reactivity</b>	Human;Rat;Mouse;
<b>Recommended dilutions</b>	Western Blot: 1/500 - 1/2000. ELISA: 1/20000. Not yet tested in other applications.
<b>Immunogen</b>	The antiserum was produced against synthesized peptide derived from human TF3C4. AA range:611-660
<b>Specificity</b>	TFIIIC90 Polyclonal Antibody detects endogenous levels of TFIIIC90 protein.
<b>Formulation</b>	Liquid in PBS containing 50% glycerol, 0.5% BSA and 0.02% sodium azide..
<b>Storage</b>	Store at -20°C. Avoid repeated freeze-thaw cycles.
<b>Protein Name</b>	General transcription factor 3C polypeptide 4
<b>Gene Name</b>	GTF3C4
<b>Cellular localization</b>	Nucleus.
<b>Purification</b>	The antibody was affinity-purified from rabbit antiserum by affinity-chromatography using epitope-specific immunogen.
<b>Clonality</b>	Polyclonal

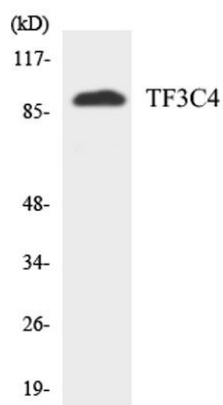
<b>Concentration</b>	1 mg/ml
<b>Observed band</b>	95kD
<b>Human Gene ID</b>	9329
<b>Human Swiss-Prot Number</b>	Q9UKN8
<b>Alternative Names</b>	GTF3C4; General transcription factor 3C polypeptide 4; TF3C-delta; Transcription factor IIIC 90 kDa subunit; TFIIC 90 kDa subunit; TFIIC90; Transcription factor IIIC subunit delta

**Background**

catalytic activity:Acetyl-CoA + histone = CoA + acetylhistone.,function:Essential for RNA polymerase III to make a number of small nuclear and cytoplasmic RNAs, including 5S RNA, tRNA, and adenovirus-associated (VA) RNA of both cellular and viral origin. Has histone acetyltransferase activity (HAT) with unique specificity for free and nucleosomal H3. May cooperate with GTF3C5 in facilitating the recruitment of TFIIB and RNA polymerase through direct interactions with BRF1, POLR3C and POLR3F. May be localized close to the A box.,sequence caution:Contaminating sequence. Potential poly-A sequence.,similarity:Belongs to the TFIIC subunit 4 family.,subunit:Part of the TFIIC subcomplex TFIIC2, consisting of six subunits, GTF3C1, GTF3C2, GTF3C3, GTF3C4, GTF3C5 and GTF3C6. Interacts with BRF1, GTF3C1, GTF3C2, GTF3C5, GTF3C6, POLR3C and POLR3F.,



**Western blot analysis of TF3C4 Antibody. The lane on the right is blocked with the TF3C4 peptide.**



Western blot analysis of the lysates from HUVEC cells using TF3C4 antibody.