

ASC-1 rabbit pAb**Cat#: orb770896 (Manual)**

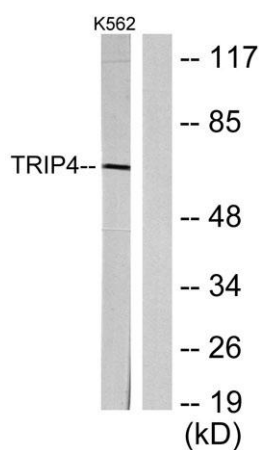
For research use only. Not intended for diagnostic use.

Product Name	ASC-1 rabbit pAb
Host species	Rabbit
Applications	WB;IHC;IF;ELISA
Species Cross-Reactivity	Human;Mouse
Recommended dilutions	Western Blot: 1/500 - 1/2000. Immunohistochemistry: 1/100 - 1/300. Immunofluorescence: 1/200 - 1/1000. ELISA: 1/10000. Not yet tested in other applications.
Immunogen	The antiserum was produced against synthesized peptide derived from human TRIP4. AA range:81-130
Specificity	ASC-1 Polyclonal Antibody detects endogenous levels of ASC-1 protein.
Formulation	Liquid in PBS containing 50% glycerol, 0.5% BSA and 0.02% sodium azide..
Storage	Store at -20°C. Avoid repeated freeze-thaw cycles.
Protein Name	Activating signal cointegrator 1
Gene Name	TRIP4
Cellular localization	Nucleus . Cytoplasm, cytosol . Cytoplasm, cytoskeleton, microtubule organizing center, centrosome . Cytoplasmic under conditions of serum deprivation (PubMed:10454579). Colocalizes with NEK6 in the centrosome (PubMed:20873783). .
Purification	The antibody was affinity-purified from rabbit antiserum by affinity-chromatography using epitope-specific immunogen.

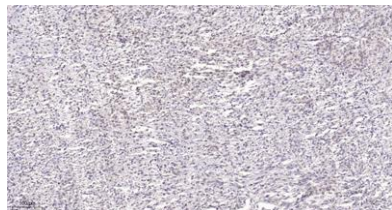
Clonality	Polyclonal
Concentration	1 mg/ml
Observed band	66kD
Human Gene ID	9325
Human Swiss-Prot Number	Q15650
Alternative Names	TRIP4; Activating signal cointegrator 1; ASC-1; Thyroid receptor-interacting protein 4; TR-interacting protein 4; TRIP-4

Background

This gene encodes a subunit of the tetrameric nuclear activating signal cointegrator 1 (ASC-1) complex, which associates with transcriptional coactivators, nuclear receptors and basal transcription factors to facilitate nuclear receptors-mediated transcription. This protein is localized in the nucleus and contains an E1A-type zinc finger domain, which mediates interaction with transcriptional coactivators and ligand-bound nuclear receptors, such as thyroid hormone receptor and retinoid X receptor alpha, but not glucocorticoid receptor. Mutations in this gene are associated with spinal muscular atrophy with congenital bone fractures-1 (SMABF1). [provided by RefSeq, Apr 2016],



Western blot analysis of lysates from K562 cells, using TRIP4 Antibody. The lane on the right is blocked with the synthesized peptide.



Immunohistochemical analysis of paraffin-embedded human Small intestinal stromal tumor. 1, Tris-EDTA, pH9.0 was used for antigen retrieval. 2 Antibody was diluted at 1:200 (4° overnight). 3, Secondary antibody was diluted at 1:200 (room temperature, 45min).