

CCDC102A rabbit pAb**Cat#: orb770887 (Manual)**

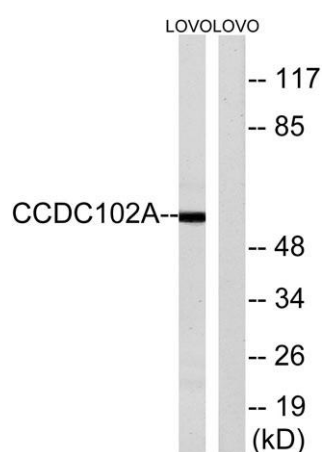
For research use only. Not intended for diagnostic use.

Product Name	CCDC102A rabbit pAb
Host species	Rabbit
Applications	WB;ELISA
Species Cross-Reactivity	Human;Mouse
Recommended dilutions	Western Blot: 1/500 - 1/2000. ELISA: 1/20000. Not yet tested in other applications.
Immunogen	The antiserum was produced against synthesized peptide derived from human CCDC102A. AA range:341-390
Specificity	CCDC102A Polyclonal Antibody detects endogenous levels of CCDC102A protein.
Formulation	Liquid in PBS containing 50% glycerol, 0.5% BSA and 0.02% sodium azide..
Storage	Store at -20°C. Avoid repeated freeze-thaw cycles.
Protein Name	Coiled-coil domain-containing protein 102A
Gene Name	CCDC102A
Cellular localization	myosin complex,
Purification	The antibody was affinity-purified from rabbit antiserum by affinity-chromatography using epitope-specific immunogen.
Clonality	Polyclonal

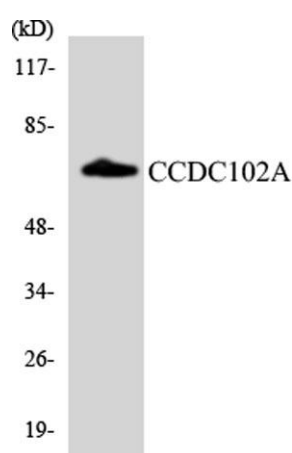
Concentration	1 mg/ml
Observed band	55kD
Human Gene ID	92922
Human Swiss-Prot Number	Q96A19
Alternative Names	CCDC102A; Coiled-coil domain-containing protein 102A

Background

CCDC102A (Coiled-Coil Domain Containing 102A) is a Protein Coding gene. An important paralog of this gene is CCDC102B.



Western blot analysis of lysates from LOVO cells, using CCDC102A Antibody. The lane on the right is blocked with the synthesized peptide.



Western blot analysis of the lysates from HepG2 cells using CCDC102A antibody.