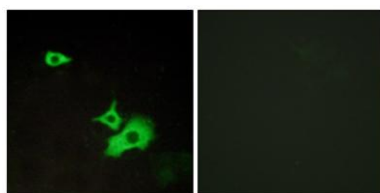


GPR37L1 rabbit pAb**Cat#: orb770885 (Manual)**

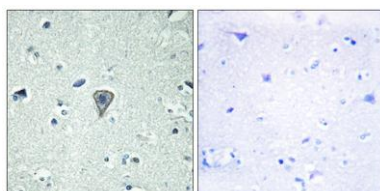
For research use only. Not intended for diagnostic use.

Product Name	GPR37L1 rabbit pAb
Host species	Rabbit
Applications	WB;IHC;IF;ELISA
Species Cross-Reactivity	Human;Rat;Mouse;
Recommended dilutions	Western Blot: 1/500 - 1/2000. Immunohistochemistry: 1/100 - 1/300. Immunofluorescence: 1/200 - 1/1000. ELISA: 1/10000. Not yet tested in other applications.
Immunogen	The antiserum was produced against synthesized peptide derived from human ETBR2. AA range:1-50
Specificity	GPR37L1 Polyclonal Antibody detects endogenous levels of GPR37L1 protein.
Formulation	Liquid in PBS containing 50% glycerol, 0.5% BSA and 0.02% sodium azide..
Storage	Store at -20°C. Avoid repeated freeze-thaw cycles.
Protein Name	Endothelin B receptor-like protein 2
Gene Name	GPR37L1
Cellular localization	Cell membrane ; Multi-pass membrane protein . Cell projection, cilium membrane ; Multi-pass membrane protein . Associates with the basal membrane of Bergmann glia cell primary cilia. .
Purification	The antibody was affinity-purified from rabbit antiserum by affinity-chromatography using epitope-specific immunogen.

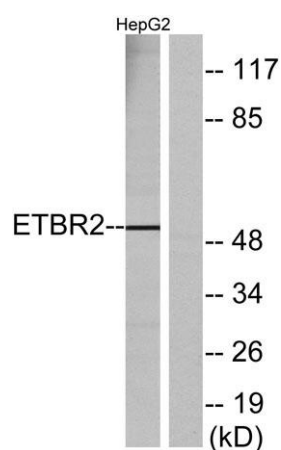
Clonality	Polyclonal
Concentration	1 mg/ml
Observed band	52kD
Human Gene ID	9283
Human Swiss-Prot Number	O60883
Alternative Names	GPR37L1; ETBRLP2; Endothelin B receptor-like protein 2; ETBR-LP-2; G-protein coupled receptor 37-like 1
Background	function:Orphan receptor.,similarity:Belongs to the G-protein coupled receptor 1 family.,tissue specificity:Expressed in the central nervous system.,



Immunofluorescence analysis of LOVO cells, using ETBR2 Antibody. The picture on the right is blocked with the synthesized peptide.



Immunohistochemistry analysis of paraffin-embedded human brain tissue, using ETBR2 Antibody. The picture on the right is blocked with the synthesized peptide.



Western blot analysis of lysates from HepG2 cells, using ETBR2 Antibody. The lane on the right is blocked with the synthesized peptide.