

**Nopp140 rabbit pAb****Cat#: orb770869 (Manual)**

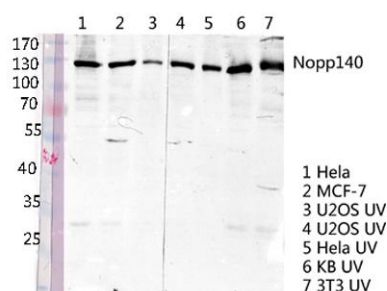
For research use only. Not intended for diagnostic use.

<b>Product Name</b>	Nopp140 rabbit pAb
<b>Host species</b>	Rabbit
<b>Applications</b>	WB;ELISA
<b>Species Cross-Reactivity</b>	Human;Mouse;Rat
<b>Recommended dilutions</b>	Western Blot: 1/500 - 1/2000. ELISA: 1/40000. Not yet tested in other applications.
<b>Immunogen</b>	Synthesized peptide derived from Nopp140 . at AA range: 620-700
<b>Specificity</b>	Nopp140 Polyclonal Antibody detects endogenous levels of Nopp140 protein.
<b>Formulation</b>	Liquid in PBS containing 50% glycerol, 0.5% BSA and 0.02% sodium azide..
<b>Storage</b>	Store at -20°C. Avoid repeated freeze-thaw cycles.
<b>Protein Name</b>	Nucleolar and coiled-body phosphoprotein 1
<b>Gene Name</b>	NOLC1
<b>Cellular localization</b>	Nucleus, nucleolus . Cytoplasm . Shuttles between the nucleolus and the cytoplasm. At telophase it begins to assemble into granular-like pre-nucleolar bodies which are subsequently relocated to nucleoli at the early G1-phase. .
<b>Purification</b>	The antibody was affinity-purified from rabbit antiserum by affinity-chromatography using epitope-specific immunogen.

<b>Clonality</b>	Polyclonal
<b>Concentration</b>	1 mg/ml
<b>Observed band</b>	74,130KD(Nucleolar phosphoprotein p130)
<b>Human Gene ID</b>	9221
<b>Human Swiss-Prot Number</b>	Q14978
<b>Alternative Names</b>	NOLC1; KIAA0035; NS5ATP13; Nucleolar and coiled-body phosphoprotein 1; 140 kDa nucleolar phosphoprotein; Nopp140; Hepatitis C virus NS5A-transactivated protein 13; HCV NS5A-transactivated protein 13; Nucleolar 130 kDa protein; Nucleolar pho

### Background

function:Related to nucleologenesis, may play a role in the maintenance of the fundamental structure of the fibrillar center and dense fibrillar component in the nucleolus. It has intrinsic GTPase and ATPase activities. May play an important role in transcription catalyzed by RNA polymerase I.,PTM:Undergoes rapid and massive phosphorylation/dephosphorylation cycles on CK2 and PKC sites. There is evidence suggesting that CDC2 kinase phosphorylates p130 at the M-phase.,similarity:Contains 1 LisH domain.,subcellular location:Shuttles between the nucleolus and the cytoplasm. At telophase it begins to assemble into granular-like pre-nucleolar bodies which are subsequently relocated to nucleoli at the early G1-phase.,subunit:Interacts with RNA polymerase I 194 kDa subunit (RPA194) and with casein kinase-II.,



**Western blot analysis of various lysis using Nopp140 Polyclonal Antibody diluted at 1:2000. Secondary antibody(catalog#:RS0002) was diluted at 1:20000**