

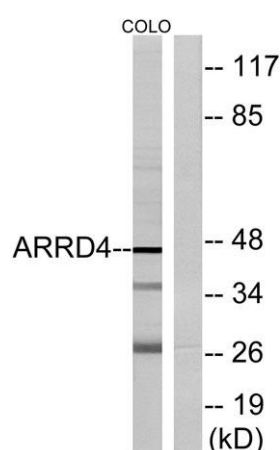
**Arrdc4 rabbit pAb****Cat#: orb770860 (Manual)**

For research use only. Not intended for diagnostic use.

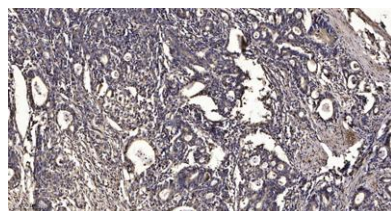
<b>Product Name</b>	Arrdc4 rabbit pAb
<b>Host species</b>	Rabbit
<b>Applications</b>	WB;IHC;IF;ELISA
<b>Species Cross-Reactivity</b>	Human;Rat;Mouse;
<b>Recommended dilutions</b>	Western Blot: 1/500 - 1/2000. Immunohistochemistry: 1/100 - 1/300. ELISA: 1/20000. Not yet tested in other applications.
<b>Immunogen</b>	The antiserum was produced against synthesized peptide derived from human ARRD4. AA range:127-176
<b>Specificity</b>	Arrdc4 Polyclonal Antibody detects endogenous levels of Arrdc4 protein.
<b>Formulation</b>	Liquid in PBS containing 50% glycerol, 0.5% BSA and 0.02% sodium azide..
<b>Storage</b>	Store at -20°C. Avoid repeated freeze-thaw cycles.
<b>Protein Name</b>	Arrestin domain-containing protein 4
<b>Gene Name</b>	ARRDC4
<b>Cellular localization</b>	Early endosome . Cell membrane ; Peripheral membrane protein ; Cytoplasmic side . Cytoplasmic vesicle . Also found in extracellular vesicles different from exosomes. .
<b>Purification</b>	The antibody was affinity-purified from rabbit antiserum by affinity-chromatography using epitope-specific immunogen.

<b>Clonality</b>	Polyclonal
<b>Concentration</b>	1 mg/ml
<b>Observed band</b>	45kD
<b>Human Gene ID</b>	91947
<b>Human Swiss-Prot Number</b>	Q8NCT1
<b>Alternative Names</b>	ARRDC4; Arrestin domain-containing protein 4

**Background** similarity:Belongs to the arrestin family.,



Western blot analysis of lysates from COLO cells, using ARRDC4 Antibody. The lane on the right is blocked with the synthesized peptide.



Immunohistochemical analysis of paraffin-embedded human Gastric adenocarcinoma. 1, Antibody was diluted at 1:200(4° overnight). 2, Tris-EDTA,pH9.0 was used for antigen retrieval. 3,Secondary antibody was diluted at 1:200(room temperature, 45min).