

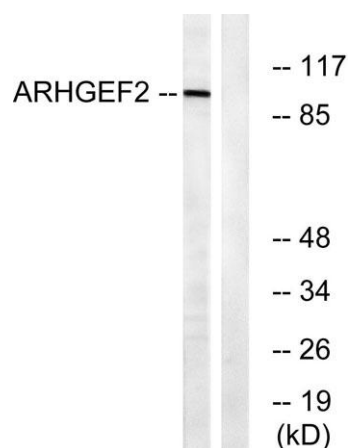
Lfc rabbit pAb

Cat#: orb770856 (Manual)

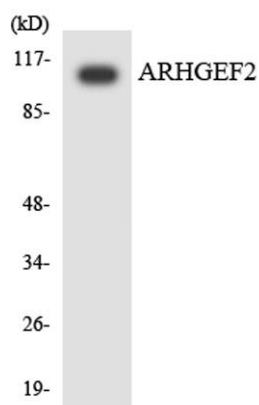
For research use only. Not intended for diagnostic use.

Product Name	Lfc rabbit pAb
Host species	Rabbit
Applications	WB;IHC;IF;ELISA
Species Cross-Reactivity	Human;Rat;Mouse;
Recommended dilutions	Western Blot: 1/500 - 1/2000. Immunohistochemistry: 1/100 - 1/300. ELISA: 1/20000. Not yet tested in other applications.
Immunogen	The antiserum was produced against synthesized peptide derived from internal human ARHGEF2. AA range:383-432
Specificity	Lfc Polyclonal Antibody detects endogenous levels of Lfc protein.
Formulation	Liquid in PBS containing 50% glycerol, 0.5% BSA and 0.02% sodium azide..
Storage	Store at -20°C. Avoid repeated freeze-thaw cycles.
Protein Name	Rho guanine nucleotide exchange factor 2
Gene Name	ARHGEF2
Cellular localization	Cytoplasm, cytoskeleton . Cytoplasm . Cell junction, tight junction . Golgi apparatus . Cytoplasm, cytoskeleton, spindle . Cell projection, ruffle membrane . Cytoplasmic vesicle . Localizes to the tips of cortical microtubules of the mitotic spindle during cell division, and is further released upon microtubule depolymerization (PubMed:15827085). Recruited into membrane ruffles induced by S.flexneri at tight junctions of polarized epithelial cells (PubMed:19043560). Colocalized with NOD2 and RIPK2 in vesicles and with the cytoskeleton (PubMed:21887730). .

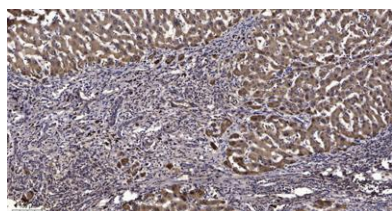
Purification	The antibody was affinity-purified from rabbit antiserum by affinity-chromatography using epitope-specific immunogen.
Clonality	Polyclonal
Concentration	1 mg/ml
Observed band	101kD
Human Gene ID	9181
Human Swiss-Prot Number	Q92974
Alternative Names	ARHGEF2; KIAA0651; LFP40; Rho guanine nucleotide exchange factor 2; Guanine nucleotide exchange factor H1; GEF-H1; Microtubule-regulated Rho-GEF; Proliferating cell nucleolar antigen p40
Background	Rho GTPases play a fundamental role in numerous cellular processes that are initiated by extracellular stimuli that work through G protein coupled receptors. The encoded protein may form complex with G proteins and stimulate rho-dependent signals. Alternatively spliced transcript variants encoding different isoforms have been identified.[provided by RefSeq, Jun 2009],



Western blot analysis of lysates from RAW264.7 cells, using ARHGEF2 Antibody. The lane on the right is blocked with the synthesized peptide.



Western blot analysis of the lysates from COLO205 cells using ARHGEF2 antibody.



Immunohistochemical analysis of paraffin-embedded human liver cancer. 1, Antibody was diluted at 1:200(4° overnight). 2, Tris-EDTA,pH9.0 was used for antigen retrieval. 3,Secondary antibody was diluted at 1:200(room temperature, 45min).