

Dyrk1B rabbit pAb

Cat#: orb770845 (Manual)

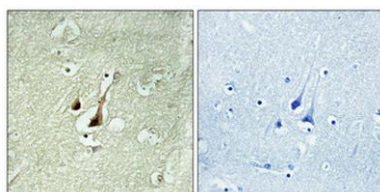
For research use only. Not intended for diagnostic use.

Product Name	Dyrk1B rabbit pAb
Host species	Rabbit
Applications	WB;IHC;IF;ELISA
Species Cross-Reactivity	Human;Mouse
Recommended dilutions	Western Blot: 1/500 - 1/2000. Immunohistochemistry: 1/100 - 1/300. ELISA: 1/20000. Not yet tested in other applications.
Immunogen	The antiserum was produced against synthesized peptide derived from human DYR1B. AA range:331-380
Specificity	Dyrk1B Polyclonal Antibody detects endogenous levels of Dyrk1B protein.
Formulation	Liquid in PBS containing 50% glycerol, 0.5% BSA and 0.02% sodium azide..
Storage	Store at -20°C. Avoid repeated freeze-thaw cycles.
Protein Name	Dual specificity tyrosine-phosphorylation-regulated kinase 1B
Gene Name	DYRK1B
Cellular localization	Nucleus . Nucleus, nucleolus . Chromosome . Localizes to sites of double-strand breaks (DSBs) following DNA damage. .
Purification	The antibody was affinity-purified from rabbit antiserum by affinity-chromatography using epitope-specific immunogen.
Clonality	Polyclonal

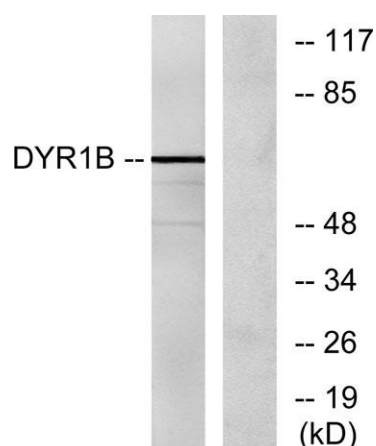
Concentration	1 mg/ml
Observed band	70kD
Human Gene ID	9149
Human Swiss-Prot Number	Q9Y463
Alternative Names	DYRK1B; MIRK; Dual specificity tyrosine-phosphorylation-regulated kinase 1B; Minibrain-related kinase; Mirk protein kinase

Background

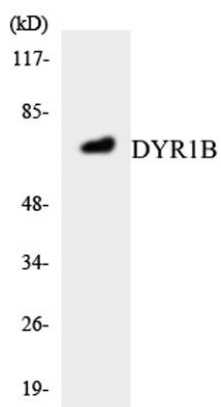
This gene encodes a member of a family of nuclear-localized protein kinases. The encoded protein participates in the regulation of the cell cycle. Expression of this gene may be altered in tumor cells, and mutations in this gene were found to cause abdominal obesity-metabolic syndrome 3. Alternative splicing results in multiple transcript variants. [provided by RefSeq, Jun 2014].



Immunohistochemical analysis of paraffin-embedded Human brain. Antibody was diluted at 1:100(4° overnight). High-pressure and temperature Tris-EDTA,pH8.0 was used for antigen retrieval. Negative ctrl (right) obtained from antibody was pre-absorbed by i



Western blot analysis of lysates from Jurkat cells, using DYRK1B Antibody. The lane on the right is blocked with the synthesized peptide.



Western blot analysis of the lysates from COLO205 cells using DYR1B antibody.