

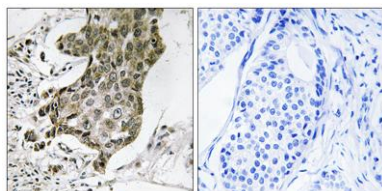
Rabaptin-5 α rabbit pAb

Cat#: orb770841 (Manual)

For research use only. Not intended for diagnostic use.

Product Name	Rabaptin-5 α rabbit pAb
Host species	Rabbit
Applications	IHC;IF;ELISA
Species Cross-Reactivity	Human;Mouse;Rat
Recommended dilutions	Immunohistochemistry: 1/100 - 1/300. ELISA: 1/40000. Not yet tested in other applications.
Immunogen	The antiserum was produced against synthesized peptide derived from human RABEP1. AA range:549-598
Specificity	Rabaptin-5 α Polyclonal Antibody detects endogenous levels of Rabaptin-5 α protein.
Formulation	Liquid in PBS containing 50% glycerol, 0.5% BSA and 0.02% sodium azide..
Storage	Store at -20°C. Avoid repeated freeze-thaw cycles.
Protein Name	Rab GTPase-binding effector protein 1
Gene Name	RABEP1
Cellular localization	Cytoplasm. Early endosome. Recycling endosome. Cytoplasmic vesicle.
Purification	The antibody was affinity-purified from rabbit antiserum by affinity-chromatography using epitope-specific immunogen.
Clonality	Polyclonal

Concentration	1 mg/ml
Observed band	
Human Gene ID	9135
Human Swiss-Prot Number	Q15276
Alternative Names	RABEP1; RAB5EP; RABPT5; RABPT5A; Rab GTPase-binding effector protein 1; Rabaptin-4; Rabaptin-5; Rabaptin-5alpha; Renal carcinoma antigen NY-REN-17
Background	function:Rab effector protein acting as linker between gamma-adaptin, RAB4A and RAB5A. Involved in endocytic membrane fusion and membrane trafficking of recycling endosomes. Stimulates RABGEF1 mediated nucleotide exchange on RAB5A.,PTM:Proteolytic cleavage by caspases in apoptotic cells causes loss of endosome fusion activity.,similarity:Belongs to the rabaptin family.,subunit:Heterodimer with RABGEF1. The heterodimer binds RAB4A and RAB5A that have been activated by GTP-binding. Binds TSC2, GGA1, GGA2, GGA3, AP1G1 and AP1G2.,



Immunohistochemistry analysis of paraffin-embedded human breast carcinoma tissue, using RABEP1 Antibody. The picture on the right is blocked with the synthesized peptide.