

**ADCK2 rabbit pAb****Cat#: orb770832 (Manual)**

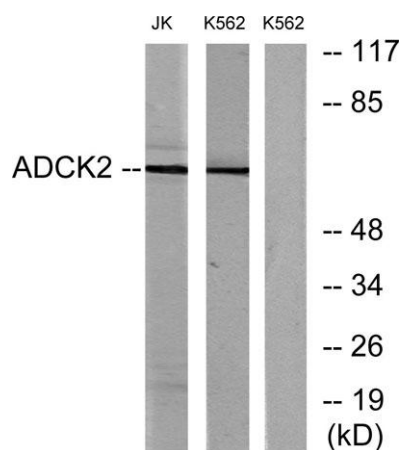
For research use only. Not intended for diagnostic use.

<b>Product Name</b>	ADCK2 rabbit pAb
<b>Host species</b>	Rabbit
<b>Applications</b>	WB;IHC;IF;ELISA
<b>Species Cross-Reactivity</b>	Human;Rat;Mouse;
<b>Recommended dilutions</b>	Western Blot: 1/500 - 1/2000. Immunohistochemistry: 1/100 - 1/300. Immunofluorescence: 1/200 - 1/1000. ELISA: 1/10000. Not yet tested in other applications.
<b>Immunogen</b>	The antiserum was produced against synthesized peptide derived from human ADCK2. AA range:241-290
<b>Specificity</b>	ADCK2 Polyclonal Antibody detects endogenous levels of ADCK2 protein.
<b>Formulation</b>	Liquid in PBS containing 50% glycerol, 0.5% BSA and 0.02% sodium azide..
<b>Storage</b>	Store at -20°C. Avoid repeated freeze-thaw cycles.
<b>Protein Name</b>	Uncharacterized aarF domain-containing protein kinase 2
<b>Gene Name</b>	ADCK2
<b>Cellular localization</b>	Membrane ; Single-pass membrane protein .
<b>Purification</b>	The antibody was affinity-purified from rabbit antiserum by affinity-chromatography using epitope-specific immunogen.
<b>Clonality</b>	Polyclonal

<b>Concentration</b>	1 mg/ml
<b>Observed band</b>	69kD
<b>Human Gene ID</b>	90956
<b>Human Swiss-Prot Number</b>	Q7Z695
<b>Alternative Names</b>	ADCK2; AARF; Uncharacterized aarF domain-containing protein kinase 2

#### Background

function: The function of this protein is not yet clear. It is not known if it has protein kinase activity and what type of substrate it would phosphorylate (Ser, Thr or Tyr).,sequence caution: Aberrant splicing.,similarity: Belongs to the protein kinase superfamily. ADCK protein kinase family.,similarity: Contains 1 protein kinase domain.,



Western blot analysis of lysates from Jurkat and K562 cells, using ADCK2 Antibody. The lane on the right is blocked with the synthesized peptide.