

Claudin-8 rabbit pAb

Cat#: orb770824 (Manual)

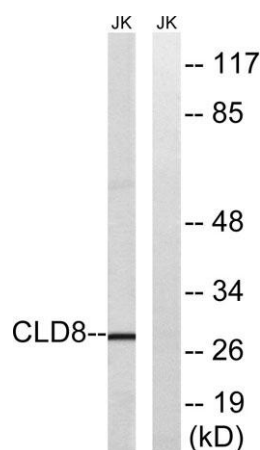
For research use only. Not intended for diagnostic use.

Product Name	Claudin-8 rabbit pAb
Host species	Rabbit
Applications	WB;ELISA
Species Cross-Reactivity	Human;Rat;Mouse;
Recommended dilutions	Western Blot: 1/500 - 1/2000. ELISA: 1/5000. Not yet tested in other applications.
Immunogen	The antiserum was produced against synthesized peptide derived from human CLDN8. AA range:81-130
Specificity	Claudin-8 Polyclonal Antibody detects endogenous levels of Claudin-8 protein.
Formulation	Liquid in PBS containing 50% glycerol, 0.5% BSA and 0.02% sodium azide..
Storage	Store at -20°C. Avoid repeated freeze-thaw cycles.
Protein Name	Claudin-8
Gene Name	CLDN8
Cellular localization	Cell junction, tight junction . Cell membrane ; Multi-pass membrane protein . Localizes to tight junctions in all 3 segments of the epididymis, in the caput found in the lateral margins of principal cells, and in the corpus at the interface between basal and principal cells. .
Purification	The antibody was affinity-purified from rabbit antiserum by affinity-chromatography using epitope-specific immunogen.

Clonality	Polyclonal
Concentration	1 mg/ml
Observed band	28kD
Human Gene ID	9073
Human Swiss-Prot Number	P56748
Alternative Names	CLDN8; Claudin-8

Background

This gene encodes a member of the claudin family. Claudins are integral membrane proteins and components of tight junction strands. Tight junction strands serve as a physical barrier to prevent solutes and water from passing freely through the paracellular space between epithelial or endothelial cell sheets, and also play critical roles in maintaining cell polarity and signal transductions. This protein plays important roles in the paracellular cation barrier of the distal renal tubule, and in the paracellular barrier to prevent sodium back-leakage in distal colon. Differential expression of this gene has been observed in colorectal carcinoma and renal cell tumors, and along with claudin-7, is an immunohistochemical marker for the differential diagnosis of chromophobe renal cell carcinoma and renal oncocytoma.[provided by RefSeq, May 2010],



Western blot analysis of lysates from Jurkat cells, using CLDN8 Antibody. The lane on the right is blocked with the synthesized peptide.