

COX19 rabbit pAb

Cat#: orb770821 (Manual)

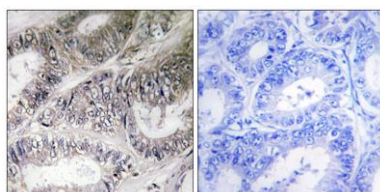
For research use only. Not intended for diagnostic use.

Product Name	COX19 rabbit pAb
Host species	Rabbit
Applications	IHC;IF;ELISA
Species Cross-Reactivity	Human;Mouse
Recommended dilutions	Immunohistochemistry: 1/100 - 1/300. ELISA: 1/20000. Not yet tested in other applications.
Immunogen	The antiserum was produced against synthesized peptide derived from human COX19. AA range:10-59
Specificity	COX19 Polyclonal Antibody detects endogenous levels of COX19 protein.
Formulation	Liquid in PBS containing 50% glycerol, 0.5% BSA and 0.02% sodium azide..
Storage	Store at -20°C. Avoid repeated freeze-thaw cycles.
Protein Name	Cytochrome c oxidase assembly protein COX19
Gene Name	COX19
Cellular localization	Cytoplasm, cytosol . Mitochondrion intermembrane space . Mitochondrion . Partitions between mitochondria and the cytosol in a copper-dependent manner. Enriched in the cytosol when intracellular copper concentrations are elevated. .
Purification	The antibody was affinity-purified from rabbit antiserum by affinity-chromatography using epitope-specific immunogen.

Clonality	Polyclonal
Concentration	1 mg/ml
Observed band	
Human Gene ID	90639
Human Swiss-Prot Number	Q49B96
Alternative Names	COX19; Cytochrome c oxidase assembly protein COX19; hCOX19

Background

COX19 encodes a cytochrome c oxidase (COX)-assembly protein. The *S. cerevisiae* Cox19 protein may play a role in metal transport to the mitochondrial intermembrane space and assembly of complex IV of the mitochondrial respiratory chain (Sacconi et al., 2005 [PubMed 16212937]).[supplied by OMIM, Mar 2008],



Immunohistochemistry analysis of paraffin-embedded human colon carcinoma tissue, using COX19 Antibody. The picture on the right is blocked with the synthesized peptide.