

Dok-2 (phospho Tyr345) rabbit pAb**Cat#: orb770815 (Manual)**

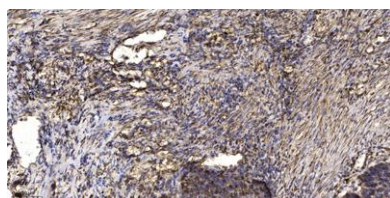
For research use only. Not intended for diagnostic use.

Product Name	Dok-2 (phospho Tyr345) rabbit pAb
Host species	Rabbit
Applications	IHC;IF;ELISA
Species Cross-Reactivity	Human;Mouse
Recommended dilutions	Immunohistochemistry: 1/100 - 1/300. ELISA: 1/20000. Not yet tested in other applications.
Immunogen	Synthesized phospho-peptide around the phosphorylation site of human Dok-2 (phospho Tyr345)
Specificity	Phospho-Dok-2 (Y345) Polyclonal Antibody detects endogenous levels of Dok-2 protein only when phosphorylated at Y345.
Formulation	Liquid in PBS containing 50% glycerol, 0.5% BSA and 0.02% sodium azide..
Storage	Store at -20°C. Avoid repeated freeze-thaw cycles.
Protein Name	Docking protein 2
Gene Name	DOK2
Cellular localization	cytosol,
Purification	The antibody was affinity-purified from rabbit antiserum by affinity-chromatography using epitope-specific immunogen.
Clonality	Polyclonal

Concentration	1 mg/ml
Observed band	
Human Gene ID	9046
Human Swiss-Prot Number	O60496
Alternative Names	DOK2; Docking protein 2; Downstream of tyrosine kinase 2; p56(dok-2)

Background

docking protein 2(DOK2) Homo sapiens The protein encoded by this gene is constitutively tyrosine phosphorylated in hematopoietic progenitors isolated from chronic myelogenous leukemia (CML) patients in the chronic phase. It may be a critical substrate for p210(bcr/abl), a chimeric protein whose presence is associated with CML. This encoded protein binds p120 (RasGAP) from CML cells. [provided by RefSeq, Jul 2008],



Immunohistochemical analysis of paraffin-embedded human Squamous cell carcinoma of lung. 1, Antibody was diluted at 1:200(4° overnight). 2, Tris-EDTA,pH9.0 was used for antigen retrieval. 3,Secondary antibody was diluted at 1:200(room temperature, 45min).