

## ERI1 rabbit pAb

**Cat#: orb770814 (Manual)**

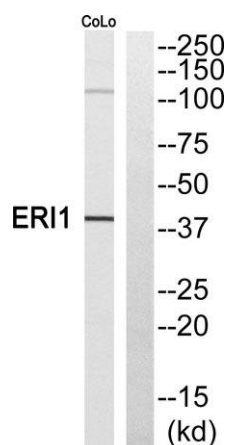
For research use only. Not intended for diagnostic use.

<b>Product Name</b>	ERI1 rabbit pAb
<b>Host species</b>	Rabbit
<b>Applications</b>	WB;ELISA
<b>Species Cross-Reactivity</b>	Human;Mouse;Rat
<b>Recommended dilutions</b>	Western Blot: 1/500 - 1/2000. ELISA: 1/5000. Not yet tested in other applications.
<b>Immunogen</b>	The antiserum was produced against synthesized peptide derived from human ERI1. AA range:261-310
<b>Specificity</b>	ERI1 Polyclonal Antibody detects endogenous levels of ERI1 protein.
<b>Formulation</b>	Liquid in PBS containing 50% glycerol, 0.5% BSA and 0.02% sodium azide..
<b>Storage</b>	Store at -20°C. Avoid repeated freeze-thaw cycles.
<b>Protein Name</b>	3'-5' exoribonuclease 1
<b>Gene Name</b>	ERI1
<b>Cellular localization</b>	Cytoplasm . Nucleus . Nucleus, nucleolus .
<b>Purification</b>	The antibody was affinity-purified from rabbit antiserum by affinity-chromatography using epitope-specific immunogen.
<b>Clonality</b>	Polyclonal

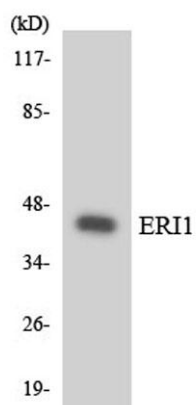
<b>Concentration</b>	1 mg/ml
<b>Observed band</b>	37kD
<b>Human Gene ID</b>	90459
<b>Human Swiss-Prot Number</b>	Q8IV48
<b>Alternative Names</b>	ERI1; 3'EXO; THEX1; 3'-5' exoribonuclease 1; 3'-5' exonuclease ERI1; Eri-1 homolog; Histone mRNA 3'-end-specific exoribonuclease; Histone mRNA 3'-exonuclease 1; Protein 3'hExo; HEXO

### Background

cofactor: Binds 2 magnesium ions per subunit., enzyme regulation: Although it can bind simultaneously with SLBP to the 3'-end of histone mRNA, the presence of SLBP prevents the exonuclease activity., function: RNA exonuclease that binds to the 3'-end of histone mRNAs and probably degrades them, suggesting that it plays an essential role in histone mRNA decay after replication. Also able to degrade the 3'-overhangs of short interfering RNAs (siRNAs) in vitro, suggesting a possible role as regulator of RNA interference (RNAi). Required for 5.8S rRNA 3'-end processing., sequence caution: Translated as Leu., similarity: Contains 1 exonuclease domain., similarity: Contains 1 SAP domain., subunit: Binds with high affinity to the stem-loop structure of replication-dependent histone pre-mRNAs. Requires the 5'-ACCCA-3' sequence present in stem-loop structure. Able to bind other mRNAs. Binds to 40S and 60S ribosomal subunits and to 80S assembled ribosomes. Also binds to 5.8s ribosomal RNA.,



**Western blot analysis of ERI1 Antibody. The lane on the right is blocked with the ERI1 peptide.**



Western blot analysis of the lysates from HUVEC cells using ERI1 antibody.