

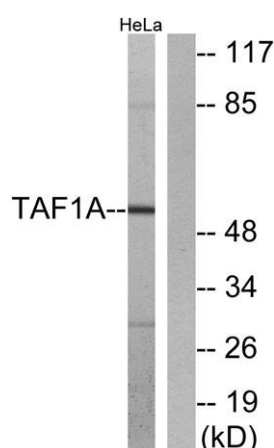
TAF I p48 rabbit pAb**Cat#: orb770807 (Manual)**

For research use only. Not intended for diagnostic use.

Product Name	TAF I p48 rabbit pAb
Host species	Rabbit
Applications	WB;IHC;IF;ELISA
Species Cross-Reactivity	Human;Rat
Recommended dilutions	Western Blot: 1/500 - 1/2000. Immunohistochemistry: 1/100 - 1/300. ELISA: 1/20000. Not yet tested in other applications.
Immunogen	The antiserum was produced against synthesized peptide derived from human TAF1A. AA range:301-350
Specificity	TAF I p48 Polyclonal Antibody detects endogenous levels of TAF I p48 protein.
Formulation	Liquid in PBS containing 50% glycerol, 0.5% BSA and 0.02% sodium azide..
Storage	Store at -20°C. Avoid repeated freeze-thaw cycles.
Protein Name	TATA box-binding protein-associated factor RNA polymerase I subunit A
Gene Name	TAF1A
Cellular localization	Nucleus.
Purification	The antibody was affinity-purified from rabbit antiserum by affinity-chromatography using epitope-specific immunogen.
Clonality	Polyclonal

Concentration	1 mg/ml
Observed band	53kD
Human Gene ID	9015
Human Swiss-Prot Number	Q15573
Alternative Names	TAF1A; TATA box-binding protein-associated factor RNA polymerase I subunit A; RNA polymerase I-specific TBP-associated factor 48 kDa; TAFI48; TATA box-binding protein-associated factor 1A; TBP-associated factor 1A; Transcription factor SL1;

Background This gene encodes a subunit of the RNA polymerase I complex, Selectivity Factor I (SLI). The encoded protein is a TATA box-binding protein-associated factor that plays a role in the assembly of the RNA polymerase I preinitiation complex. Alternate splicing results in multiple transcript variants encoding multiple isoforms.[provided by RefSeq, Jan 2011],



Western blot analysis of lysates from HeLa cells, using TAF1A Antibody. The lane on the right is blocked with the synthesized peptide.



Immunohistochemical analysis of paraffin-embedded human spleen. 1, Tris-EDTA, pH 9.0 was used for antigen retrieval. 2 Antibody was diluted at 1:200 (4°C overnight). 3, Secondary antibody was diluted at 1:200 (room temperature, 45 min).