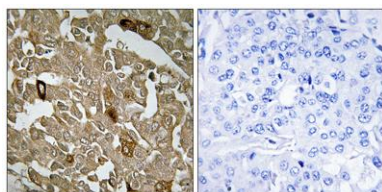


BTBD6 rabbit pAb**Cat#: orb770806 (Manual)**

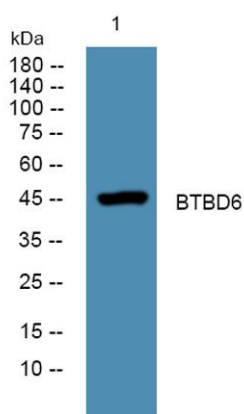
For research use only. Not intended for diagnostic use.

| | |
|---------------------------------|--|
| Product Name | BTBD6 rabbit pAb |
| Host species | Rabbit |
| Applications | WB;IHC;IF;ELISA |
| Species Cross-Reactivity | Human;Mouse |
| Recommended dilutions | Western Blot: 1/500 - 1/2000. Immunohistochemistry: 1/100 - 1/300. ELISA: 1/10000. Not yet tested in other applications. |
| Immunogen | The antiserum was produced against synthesized peptide derived from human BTBD6. AA range:91-140 |
| Specificity | BTBD6 Polyclonal Antibody detects endogenous levels of BTBD6 protein. |
| Formulation | Liquid in PBS containing 50% glycerol, 0.5% BSA and 0.02% sodium azide.. |
| Storage | Store at -20°C. Avoid repeated freeze-thaw cycles. |
| Protein Name | BTB/POZ domain-containing protein 6 |
| Gene Name | BTBD6 |
| Cellular localization | Cytoplasm . Found in punctated bodies in the cytoplasm. . |
| Purification | The antibody was affinity-purified from rabbit antiserum by affinity-chromatography using epitope-specific immunogen. |
| Clonality | Polyclonal |

| | |
|--------------------------------|--|
| Concentration | 1 mg/ml |
| Observed band | 45kD |
| Human Gene ID | 90135 |
| Human Swiss-Prot Number | Q96KE9 |
| Alternative Names | BTBD6; BDPL; BTB/POZ domain-containing protein 6; Lens BTB domain protein |
| Background | similarity:Contains 1 BTB (POZ) domain.,tissue specificity:Expressed in lens., |



Immunohistochemistry analysis of paraffin-embedded human breast carcinoma tissue, using BTBD6 Antibody. The picture on the right is blocked with the synthesized peptide.



Western blot analysis of lysates from SH-SY5Y cells, primary antibody was diluted at 1:1000, 4°C over night