

## Cleaved-PAR-4 (G48) rabbit pAb

**Cat#: orb770805 (Manual)**

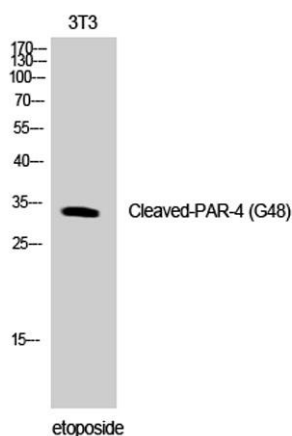
For research use only. Not intended for diagnostic use.

<b>Product Name</b>	Cleaved-PAR-4 (G48) rabbit pAb
<b>Host species</b>	Rabbit
<b>Applications</b>	WB;ELISA
<b>Species Cross-Reactivity</b>	Human;Rat;Mouse;
<b>Recommended dilutions</b>	Western Blot: 1/500 - 1/2000. ELISA: 1/5000. Not yet tested in other applications.
<b>Immunogen</b>	The antiserum was produced against synthesized peptide derived from human PAR4. AA range:29-78
<b>Specificity</b>	Cleaved-PAR-4 (G48) Polyclonal Antibody detects endogenous levels of fragment of activated PAR-4 protein resulting from cleavage adjacent to G48.
<b>Formulation</b>	Liquid in PBS containing 50% glycerol, 0.5% BSA and 0.02% sodium azide..
<b>Storage</b>	Store at -20°C. Avoid repeated freeze-thaw cycles.
<b>Protein Name</b>	Proteinase-activated receptor 4
<b>Gene Name</b>	F2RL3
<b>Cellular localization</b>	Cell membrane; Multi-pass membrane protein.
<b>Purification</b>	The antibody was affinity-purified from rabbit antiserum by affinity-chromatography using epitope-specific immunogen.
<b>Clonality</b>	Polyclonal

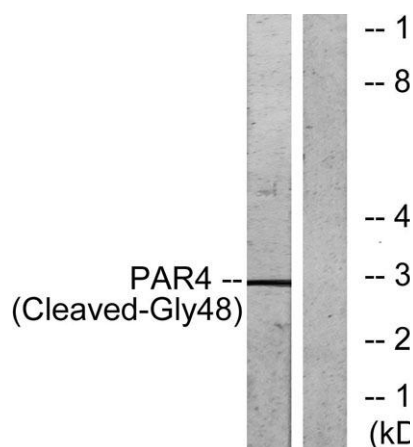
<b>Concentration</b>	1 mg/ml
<b>Observed band</b>	33kD
<b>Human Gene ID</b>	9002
<b>Human Swiss-Prot Number</b>	Q96RI0
<b>Alternative Names</b>	F2RL3; PAR4; Proteinase-activated receptor 4; PAR-4; Coagulation factor II receptor-like 3; Thrombin receptor-like 3

### Background

This gene encodes a member of the protease-activated receptor subfamily, part of the G-protein coupled receptor 1 family of proteins. The encoded receptor is proteolytically processed to reveal an extracellular N-terminal tethered ligand that binds to and activates the receptor. This receptor plays a role in blood coagulation, inflammation and response to pain. Hypomethylation at this gene may be associated with lung cancer in human patients. [provided by RefSeq, Sep 2016],



**Western Blot analysis of NIH-3T3 cells using Cleaved-PAR-4 (G48) Polyclonal Antibody**



**Western blot analysis of lysates from NIH/3T3 cells, treated with etoposide 25uM 1h, using PAR4 (Cleaved-Gly48) Antibody. The lane on the right is blocked with the synthesized peptide.**



Explore. Bioreagents.

[www.biorbyt.com](http://www.biorbyt.com)

Biorbyt Ltd  
7 Signet Court, Swann Road, Cambridge, CB5 8LA. United Kingdom  
Email: [info@biorbyt.com](mailto:info@biorbyt.com) | Phone: +44 (0)1223 859-353 | Fax: +44 (0)1223 280-240

Biorbyt LLC  
68 TW Alexander Drive, Durham, NC 27709. United States  
Email: [info@biorbyt.com](mailto:info@biorbyt.com) | Phone: +1 (415) 906-5211 | Fax: +1 (415) 651-8558