

KKIAMRE rabbit pAb**Cat#: orb770804 (Manual)**

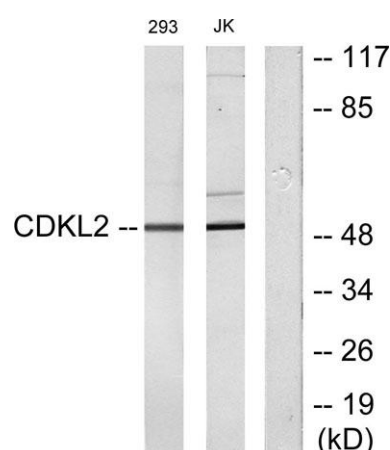
For research use only. Not intended for diagnostic use.

Product Name	KKIAMRE rabbit pAb
Host species	Rabbit
Applications	WB;IHC;IF;ELISA
Species Cross-Reactivity	Human;Rat;Mouse;
Recommended dilutions	Western Blot: 1/500 - 1/2000. Immunohistochemistry: 1/100 - 1/300. ELISA: 1/10000. Not yet tested in other applications.
Immunogen	The antiserum was produced against synthesized peptide derived from human CDKL2. AA range:211-260
Specificity	KKIAMRE Polyclonal Antibody detects endogenous levels of KKIAMRE protein.
Formulation	Liquid in PBS containing 50% glycerol, 0.5% BSA and 0.02% sodium azide..
Storage	Store at -20°C. Avoid repeated freeze-thaw cycles.
Protein Name	Cyclin-dependent kinase-like 2
Gene Name	CDKL2
Cellular localization	Cytoplasm . Nucleus .
Purification	The antibody was affinity-purified from rabbit antiserum by affinity-chromatography using epitope-specific immunogen.
Clonality	Polyclonal

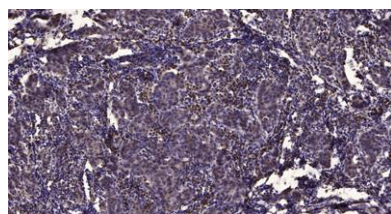
Concentration	1 mg/ml
Observed band	56kD
Human Gene ID	8999
Human Swiss-Prot Number	Q92772
Alternative Names	CDKL2; Cyclin-dependent kinase-like 2; Protein kinase p56 KKIAMRE; Serine/threonine-protein kinase KKIAMRE

Background

This gene product is a member of a large family of CDC2-related serine/threonine protein kinases. It accumulates primarily in the cytoplasm, with lower levels in the nucleus. [provided by RefSeq, Jul 2008],



Western blot analysis of lysates from Jurkat and 293 cells, using CDKL2 Antibody. The lane on the right is blocked with the synthesized peptide.



Immunohistochemical analysis of paraffin-embedded human Breast cancer. 1, Antibody was diluted at 1:200(4° overnight). 2, Tris-EDTA,pH9.0 was used for antigen retrieval. 3,Secondary antibody was diluted at 1:200(room temperature, 45min).