

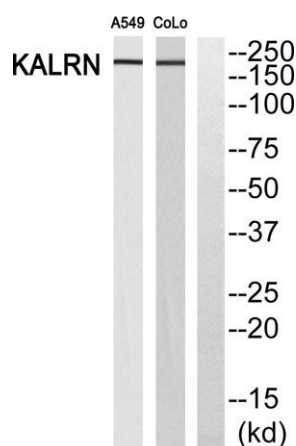
Duo rabbit pAb

Cat#: orb770803 (Manual)

For research use only. Not intended for diagnostic use.

Product Name	Duo rabbit pAb
Host species	Rabbit
Applications	WB;ELISA
Species Cross-Reactivity	Human;Mouse;Rat
Recommended dilutions	Western Blot: 1/500 - 1/2000. ELISA: 1/20000. Not yet tested in other applications.
Immunogen	Synthesized peptide derived from Duo . at AA range: 810-890
Specificity	Duo Polyclonal Antibody detects endogenous levels of Duo protein.
Formulation	Liquid in PBS containing 50% glycerol, 0.5% BSA and 0.02% sodium azide..
Storage	Store at -20°C. Avoid repeated freeze-thaw cycles.
Protein Name	Kalirin
Gene Name	KALRN
Cellular localization	Cytoplasm . Cytoplasm, cytoskeleton . Associated with the cytoskeleton.
Purification	The antibody was affinity-purified from rabbit antiserum by affinity-chromatography using epitope-specific immunogen.
Clonality	Polyclonal

Concentration	1 mg/ml
Observed band	
Human Gene ID	8997
Human Swiss-Prot Number	O60229
Alternative Names	KALRN; DUET; DUO; HAPIP; TRAD; Kalirin; Huntingtin-associated protein-interacting protein; Protein Duo; Serine/threonine-protein kinase with Dbl- and pleckstrin homology domain
Background	Huntington's disease (HD), a neurodegenerative disorder characterized by loss of striatal neurons, is caused by an expansion of a polyglutamine tract in the HD protein huntingtin. This gene encodes a protein that interacts with the huntingtin-associated protein 1, which is a huntingtin binding protein that may function in vesicle trafficking. [provided by RefSeq, Apr 2016],



Western blot analysis of KALRN Antibody. The lane on the right is blocked with the KALRN peptide.