

Cyclin C (phospho Ser275) rabbit pAb**Cat#: orb770784 (Manual)**

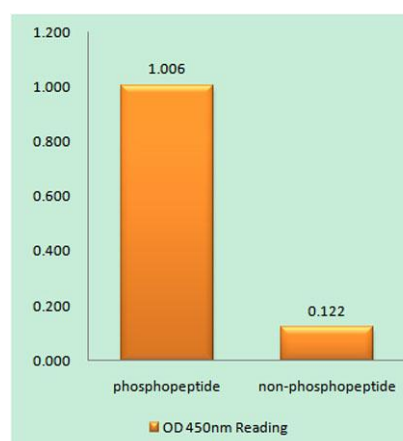
For research use only. Not intended for diagnostic use.

Product Name	Cyclin C (phospho Ser275) rabbit pAb
Host species	Rabbit
Applications	WB;IHC;IF;ELISA
Species Cross-Reactivity	Human;Mouse;Rat
Recommended dilutions	Western Blot: 1/500 - 1/2000. Immunohistochemistry: 1/100 - 1/300. ELISA: 1/10000. Not yet tested in other applications.
Immunogen	The antiserum was produced against synthesized peptide derived from human Cyclin C around the phosphorylation site of Ser275. AA range:234-283
Specificity	Phospho-Cyclin C (S275) Polyclonal Antibody detects endogenous levels of Cyclin C protein only when phosphorylated at S275.
Formulation	Liquid in PBS containing 50% glycerol, 0.5% BSA and 0.02% sodium azide..
Storage	Store at -20°C. Avoid repeated freeze-thaw cycles.
Protein Name	Cyclin-C
Gene Name	CCNC
Cellular localization	Nucleus .
Purification	The antibody was affinity-purified from rabbit antiserum by affinity-chromatography using epitope-specific immunogen.
Clonality	Polyclonal

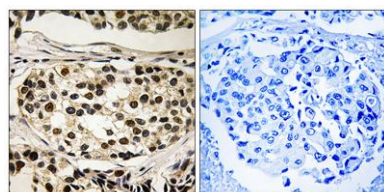
Concentration	1 mg/ml
Observed band	33-37kD
Human Gene ID	892
Human Swiss-Prot Number	P24863
Alternative Names	CCNC; Cyclin-C; SRB11 homolog; hSRB11

Background

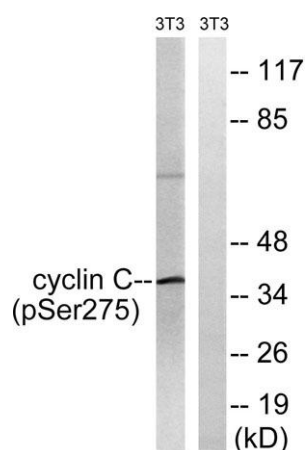
The protein encoded by this gene is a member of the cyclin family of proteins. The encoded protein interacts with cyclin-dependent kinase 8 and induces the phosphorylation of the carboxy-terminal domain of the large subunit of RNA polymerase II. The level of mRNAs for this gene peaks in the G1 phase of the cell cycle. Two transcript variants encoding different isoforms have been found for this gene. [provided by RefSeq, Jul 2008],



Enzyme-Linked Immunosorbent Assay (Phospho-ELISA) for Immunogen Phosphopeptide (Phospho-left) and Non-Phosphopeptide (Phospho-right), using Cyclin C (Phospho-Ser275) Antibody



Immunohistochemistry analysis of paraffin-embedded human breast carcinoma, using Cyclin C (Phospho-Ser275) Antibody. The picture on the right is blocked with the phospho peptide.



Western blot analysis of lysates from NIH/3T3 cells treated with UV 15', using Cyclin C (Phospho-Ser275) Antibody. The lane on the right is blocked with the phospho peptide.