

**Cyclin B1 (phospho Ser147) rabbit pAb****Cat#: orb770781 (Manual)**

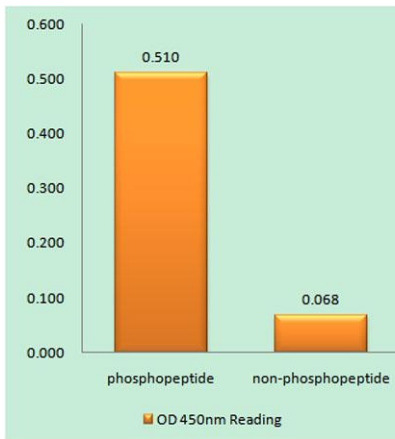
For research use only. Not intended for diagnostic use.

<b>Product Name</b>	Cyclin B1 (phospho Ser147) rabbit pAb
<b>Host species</b>	Rabbit
<b>Applications</b>	WB;IHC;IF;ELISA
<b>Species Cross-Reactivity</b>	Human;Mouse;Rat
<b>Recommended dilutions</b>	Western Blot: 1/500 - 1/2000. Immunohistochemistry: 1/100 - 1/300. ELISA: 1/10000. Not yet tested in other applications.
<b>Immunogen</b>	The antiserum was produced against synthesized peptide derived from human Cyclin B1 around the phosphorylation site of Ser147. AA range:121-170
<b>Specificity</b>	Phospho-Cyclin B1 (S147) Polyclonal Antibody detects endogenous levels of Cyclin B1 protein only when phosphorylated at S147.
<b>Formulation</b>	Liquid in PBS containing 50% glycerol, 0.5% BSA and 0.02% sodium azide..
<b>Storage</b>	Store at -20°C. Avoid repeated freeze-thaw cycles.
<b>Protein Name</b>	G2/mitotic-specific cyclin-B1
<b>Gene Name</b>	CCNB1
<b>Cellular localization</b>	Cytoplasm. Nucleus. Cytoplasm, cytoskeleton, microtubule organizing center, centrosome.
<b>Purification</b>	The antibody was affinity-purified from rabbit antiserum by affinity-chromatography using epitope-specific immunogen.
<b>Clonality</b>	Polyclonal

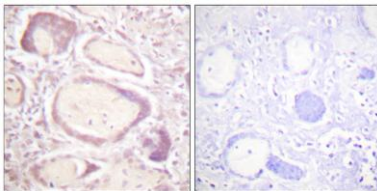
<b>Concentration</b>	1 mg/ml
<b>Observed band</b>	60kD
<b>Human Gene ID</b>	891
<b>Human Swiss-Prot Number</b>	P14635
<b>Alternative Names</b>	CCNB1; CCNB; G2/mitotic-specific cyclin-B1

## Background

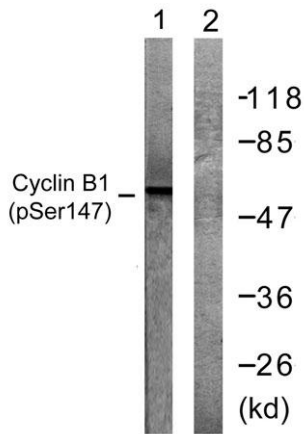
The protein encoded by this gene is a regulatory protein involved in mitosis. The gene product complexes with p34(cdc2) to form the maturation-promoting factor (MPF). Two alternative transcripts have been found, a constitutively expressed transcript and a cell cycle-regulated transcript, that is expressed predominantly during G2/M phase. The different transcripts result from the use of alternate transcription initiation sites. [provided by RefSeq, Jul 2008],



**Enzyme-Linked Immunosorbent Assay (Phospho-ELISA) for Immunogen Phosphopeptide (Phospho-left) and Non-Phosphopeptide (Phospho-right), using Cyclin B1 (Phospho-Ser147) Antibody**



**Immunohistochemistry analysis of paraffin-embedded human placenta, using Cyclin B1 (Phospho-Ser147) Antibody. The picture on the right is blocked with the phospho peptide.**



Western blot analysis of lysates from Jurkat cells treated with UV 15', using Cyclin B1 (Phospho-Ser147) Antibody. The lane on the right is blocked with the phospho peptide.