

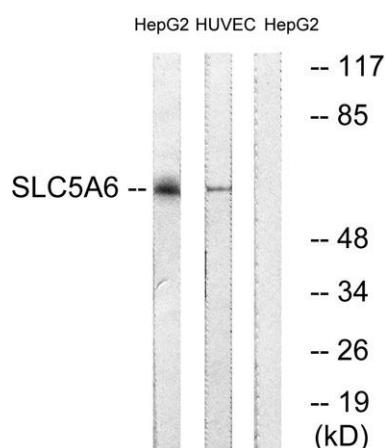
SMVT rabbit pAb**Cat#: orb770776 (Manual)**

For research use only. Not intended for diagnostic use.

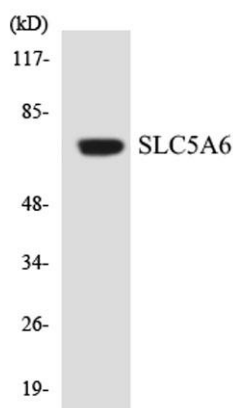
Product Name	SMVT rabbit pAb
Host species	Rabbit
Applications	WB; ELISA;IHC
Species Cross-Reactivity	Human;Rat;Mouse;
Recommended dilutions	WB 1:500-2000;IHC-p 1:50-300; ELISA 2000-20000
Immunogen	The antiserum was produced against synthesized peptide derived from human SLC5A6. AA range:551-600
Specificity	SMVT Polyclonal Antibody detects endogenous levels of SMVT protein.
Formulation	Liquid in PBS containing 50% glycerol, 0.5% BSA and 0.02% sodium azide..
Storage	Store at -20°C. Avoid repeated freeze-thaw cycles.
Protein Name	Sodium-dependent multivitamin transporter
Gene Name	SLC5A6
Cellular localization	Cell membrane ; Multi-pass membrane protein .; Cell membrane ; Multi-pass membrane protein . (Microbial infection) Exposure to E.coli lipopolysaccharides leads to reduced cell membrane localization. .
Purification	The antibody was affinity-purified from rabbit antiserum by affinity-chromatography using epitope-specific immunogen.

Clonality	Polyclonal
Concentration	1 mg/ml
Observed band	68kD
Human Gene ID	8884
Human Swiss-Prot Number	Q9Y289
Alternative Names	SLC5A6; SMVT; Sodium-dependent multivitamin transporter; Na(+)-dependent multivitamin transporter; Solute carrier family 5 member 6

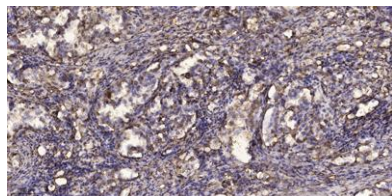
Background function:Transports pantothenate, biotin and lipoate in the presence of sodium.,similarity:Belongs to the sodium:solute symporter (SSF) (TC 2.A.21) family.,



Western blot analysis of lysates from HepG2 and HUVEC cells, using SLC5A6 Antibody. The lane on the right is blocked with the synthesized peptide.



Western blot analysis of the lysates from COLO205 cells using SLC5A6 antibody.



Immunohistochemical analysis of paraffin-embedded human Squamous cell carcinoma of lung. 1, Antibody was diluted at 1:200(4° overnight). 2, Tris-EDTA,pH9.0 was used for antigen retrieval. 3,Secondary antibody was diluted at 1:200(room temperature, 45min).