

**eIF3 $\zeta$  rabbit pAb****Cat#: orb770722 (Manual)**

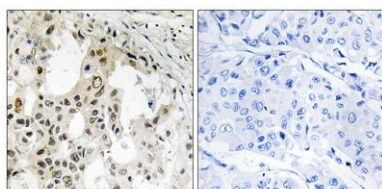
For research use only. Not intended for diagnostic use.

<b>Product Name</b>	eIF3 $\zeta$ rabbit pAb
<b>Host species</b>	Rabbit
<b>Applications</b>	WB;IHC;IF;ELISA
<b>Species Cross-Reactivity</b>	Human;Mouse
<b>Recommended dilutions</b>	Western Blot: 1/500 - 1/2000. Immunohistochemistry: 1/100 - 1/300. ELISA: 1/40000. Not yet tested in other applications.
<b>Immunogen</b>	The antiserum was produced against synthesized peptide derived from human EIF3D. AA range:101-150
<b>Specificity</b>	eIF3 $\zeta$ Polyclonal Antibody detects endogenous levels of eIF3 $\zeta$ protein.
<b>Formulation</b>	Liquid in PBS containing 50% glycerol, 0.5% BSA and 0.02% sodium azide..
<b>Storage</b>	Store at -20°C. Avoid repeated freeze-thaw cycles.
<b>Protein Name</b>	Eukaryotic translation initiation factor 3 subunit D
<b>Gene Name</b>	EIF3D
<b>Cellular localization</b>	Cytoplasm .
<b>Purification</b>	The antibody was affinity-purified from rabbit antiserum by affinity-chromatography using epitope-specific immunogen.
<b>Clonality</b>	Polyclonal

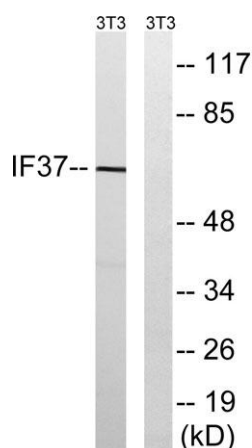
<b>Concentration</b>	1 mg/ml
<b>Observed band</b>	64kD
<b>Human Gene ID</b>	8664
<b>Human Swiss-Prot Number</b>	O15371
<b>Alternative Names</b>	EIF3D; EIF3S7; Eukaryotic translation initiation factor 3 subunit D; eIF3d; Eukaryotic translation initiation factor 3 subunit 7; eIF-3-zeta; eIF3 p66

## Background

Eukaryotic translation initiation factor-3 (eIF3), the largest of the eIFs, is a multiprotein complex composed of at least ten nonidentical subunits. The complex binds to the 40S ribosome and helps maintain the 40S and 60S ribosomal subunits in a dissociated state. It is also thought to play a role in the formation of the 40S initiation complex by interacting with the ternary complex of eIF2/GTP/methionyl-tRNA, and by promoting mRNA binding. The protein encoded by this gene is the major RNA binding subunit of the eIF3 complex. [provided by RefSeq, Jul 2008],



**Immunohistochemistry analysis of paraffin-embedded human breast carcinoma tissue, using EIF3D Antibody. The picture on the right is blocked with the synthesized peptide.**



**Western blot analysis of lysates from NIH/3T3 cells, using EIF3D Antibody. The lane on the right is blocked with the synthesized peptide.**



Explore. Bioreagents.

[www.biorbyt.com](http://www.biorbyt.com)

Biorbyt Ltd  
7 Signet Court, Swann Road, Cambridge, CB5 8LA. United Kingdom  
Email: [info@biorbyt.com](mailto:info@biorbyt.com) | Phone: +44 (0)1223 859-353 | Fax: +44 (0)1223 280-240

Biorbyt LLC  
68 TW Alexander Drive, Durham, NC 27709. United States  
Email: [info@biorbyt.com](mailto:info@biorbyt.com) | Phone: +1 (415) 906-5211 | Fax: +1 (415) 651-8558