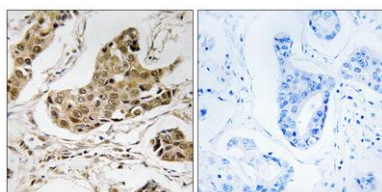


**RTCD1 rabbit pAb****Cat#: orb770717 (Manual)**

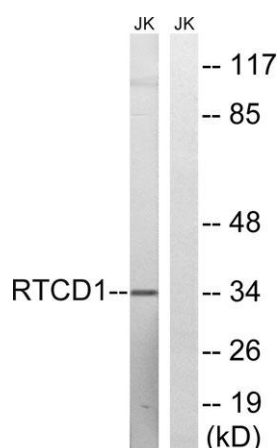
For research use only. Not intended for diagnostic use.

<b>Product Name</b>	RTCD1 rabbit pAb
<b>Host species</b>	Rabbit
<b>Applications</b>	WB;IHC;IF;ELISA
<b>Species Cross-Reactivity</b>	Human;Rat;Mouse;
<b>Recommended dilutions</b>	Western Blot: 1/500 - 1/2000. Immunohistochemistry: 1/100 - 1/300. ELISA: 1/5000. Not yet tested in other applications.
<b>Immunogen</b>	The antiserum was produced against synthesized peptide derived from human RTCD1. AA range:317-366
<b>Specificity</b>	RTCD1 Polyclonal Antibody detects endogenous levels of RTCD1 protein.
<b>Formulation</b>	Liquid in PBS containing 50% glycerol, 0.5% BSA and 0.02% sodium azide..
<b>Storage</b>	Store at -20°C. Avoid repeated freeze-thaw cycles.
<b>Protein Name</b>	RNA 3'-terminal phosphate cyclase
<b>Gene Name</b>	RTCA
<b>Cellular localization</b>	Nucleus, nucleoplasm .
<b>Purification</b>	The antibody was affinity-purified from rabbit antiserum by affinity-chromatography using epitope-specific immunogen.
<b>Clonality</b>	Polyclonal

<b>Concentration</b>	1 mg/ml
<b>Observed band</b>	40kD
<b>Human Gene ID</b>	8634
<b>Human Swiss-Prot Number</b>	O00442
<b>Alternative Names</b>	RTCA; RPC; RPC1; RTC1; RTCD1; RNA 3'-terminal phosphate cyclase; RNA cyclase; RNA-3'-phosphate cyclase; RNA terminal phosphate cyclase domain-containing protein 1; RTC domain-containing protein 1
<b>Background</b>	RNA 3'-terminal phosphate cyclase(RTCA) Homo sapiens This gene encodes a member of the RNA 3'-phosphate cyclase family. The encoded protein plays a role in RNA metabolism by catalyzing the ATP-dependent conversion of the 3'-phosphate of RNA substrates to a 2',3'-cyclic phosphodiester. Alternatively spliced transcript variants encoding multiple isoforms have been observed for this gene. [provided by RefSeq, Feb 2012],



**Immunohistochemistry analysis of paraffin-embedded human breast carcinoma tissue, using RTCD1 Antibody. The picture on the right is blocked with the synthesized peptide.**



**Western blot analysis of lysates from Jurkat cells, using RTCD1 Antibody. The lane on the right is blocked with the synthesized peptide.**