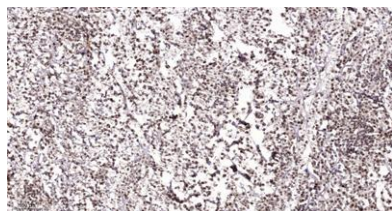


CGGBP1 rabbit pAb**Cat#: orb770690 (Manual)**

For research use only. Not intended for diagnostic use.

Product Name	CGGBP1 rabbit pAb
Host species	Rabbit
Applications	IHC;IF;ELISA
Species Cross-Reactivity	Human;Mouse
Recommended dilutions	Immunohistochemistry: 1/100 - 1/300. ELISA: 1/5000. Not yet tested in other applications.
Immunogen	The antiserum was produced against synthesized peptide derived from human CGGBP1. AA range:41-90
Specificity	CGGBP1 Polyclonal Antibody detects endogenous levels of CGGBP1 protein.
Formulation	Liquid in PBS containing 50% glycerol, 0.5% BSA and 0.02% sodium azide..
Storage	Store at -20°C. Avoid repeated freeze-thaw cycles.
Protein Name	CGG triplet repeat-binding protein 1
Gene Name	CGGBP1
Cellular localization	Nucleus .
Purification	The antibody was affinity-purified from rabbit antiserum by affinity-chromatography using epitope-specific immunogen.
Clonality	Polyclonal

Concentration	1 mg/ml
Observed band	
Human Gene ID	8545
Human Swiss-Prot Number	Q9UFW8
Alternative Names	CGGBP1; CGGBP; CGG triplet repeat-binding protein 1; CGG-binding protein 1; 20 kDa CGG-binding protein; p20-CGGBP DNA-binding protein
Background	CGGBP1 influences expression of the FMR1 gene (MIM 309550), which is associated with the fragile X mental retardation syndrome (MIM 300624), by specifically interacting with the 5-prime (CGG) _n -3-prime repeat in its 5-prime UTR.[supplied by OMIM, Mar 2008],



Immunohistochemical analysis of paraffin-embedded human Colon cancer. 1, Antibody was diluted at 1:200(4° overnight). 2, Tris-EDTA,pH9.0 was used for antigen retrieval. 3,Secondary antibody was diluted at 1:200(room temperature, 45min).