

**CPZ rabbit pAb****Cat#: orb770685 (Manual)**

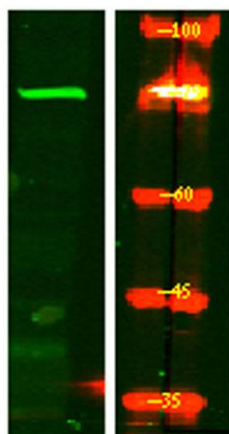
For research use only. Not intended for diagnostic use.

<b>Product Name</b>	CPZ rabbit pAb
<b>Host species</b>	Rabbit
<b>Applications</b>	WB;ELISA
<b>Species Cross-Reactivity</b>	Human;Rat
<b>Recommended dilutions</b>	Western Blot: 1/500 - 1/2000. ELISA: 1/40000. Not yet tested in other applications.
<b>Immunogen</b>	Synthesized peptide derived from CPZ . at AA range: 330-410
<b>Specificity</b>	CPZ Polyclonal Antibody detects endogenous levels of CPZ protein.
<b>Formulation</b>	Liquid in PBS containing 50% glycerol, 0.5% BSA and 0.02% sodium azide..
<b>Storage</b>	Store at -20°C. Avoid repeated freeze-thaw cycles.
<b>Protein Name</b>	Carboxypeptidase Z
<b>Gene Name</b>	CPZ
<b>Cellular localization</b>	Secreted, extracellular space, extracellular matrix .
<b>Purification</b>	The antibody was affinity-purified from rabbit antiserum by affinity-chromatography using epitope-specific immunogen.
<b>Clonality</b>	Polyclonal

<b>Concentration</b>	1 mg/ml
<b>Observed band</b>	73kD
<b>Human Gene ID</b>	8532
<b>Human Swiss-Prot Number</b>	Q66K79
<b>Alternative Names</b>	CPZ; Carboxypeptidase Z; CPZ

### Background

carboxypeptidase Z(CPZ) Homo sapiens This gene encodes a member of the metallo-carboxypeptidase family. This enzyme displays carboxypeptidase activity towards substrates with basic C-terminal residues. It is most active at neutral pH and is inhibited by active site-directed inhibitors of metallo-carboxypeptidases. Alternative splicing in the coding region results in multiple transcript variants encoding different isoforms. [provided by RefSeq, Jul 2008],



**Western Blot analysis of HEK293 lysis, using primary antibody at 1:1000 dilution. Secondary antibody(catalog#:RS23920) was diluted at 1:10000**