

DGK-ε rabbit pAb**Cat#: orb770681 (Manual)**

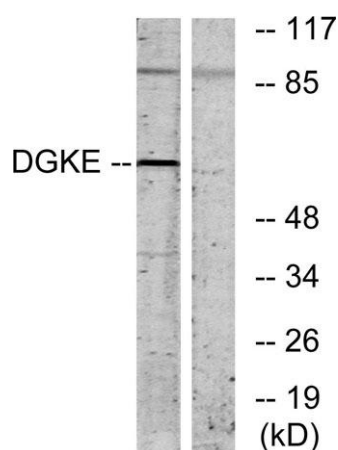
For research use only. Not intended for diagnostic use.

Product Name	DGK-ε rabbit pAb
Host species	Rabbit
Applications	WB;IHC;IF;ELISA
Species Cross-Reactivity	Human;Mouse;Rat
Recommended dilutions	Western Blot: 1/500 - 1/2000. Immunohistochemistry: 1/100 - 1/300. ELISA: 1/5000. Not yet tested in other applications.
Immunogen	The antiserum was produced against synthesized peptide derived from human DGKE. AA range:161-210
Specificity	DGK-ε Polyclonal Antibody detects endogenous levels of DGK-ε protein.
Formulation	Liquid in PBS containing 50% glycerol, 0.5% BSA and 0.02% sodium azide..
Storage	Store at -20°C. Avoid repeated freeze-thaw cycles.
Protein Name	Diacylglycerol kinase epsilon
Gene Name	DGKE
Cellular localization	Membrane ; Single-pass membrane protein . Cytoplasm .
Purification	The antibody was affinity-purified from rabbit antiserum by affinity-chromatography using epitope-specific immunogen.
Clonality	Polyclonal

Concentration	1 mg/ml
Observed band	60kD
Human Gene ID	8526
Human Swiss-Prot Number	P52429
Alternative Names	DGKE; DAGK5; Diacylglycerol kinase epsilon; DAG kinase epsilon; Diglyceride kinase epsilon; DGK-epsilon

Background

Diacylglycerol kinases are thought to be involved mainly in the regeneration of phosphatidylinositol (PI) from diacylglycerol in the PI-cycle during cell signal transduction. When expressed in mammalian cells, DGK-epsilon shows specificity for arachidonyl-containing diacylglycerol. DGK-epsilon is expressed predominantly in testis. [provided by RefSeq, Jul 2008],



Western blot analysis of lysates from K562 cells, using DGKE Antibody. The lane on the right is blocked with the synthesized peptide.