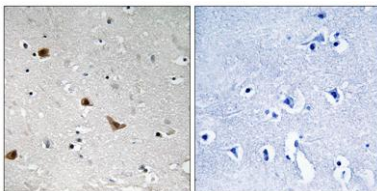


**IKK $\gamma$  (phospho Ser376) rabbit pAb****Cat#: orb770678 (Manual)**

For research use only. Not intended for diagnostic use.

<b>Product Name</b>	IKK $\gamma$ (phospho Ser376) rabbit pAb
<b>Host species</b>	Rabbit
<b>Applications</b>	IHC;IF;ELISA
<b>Species Cross-Reactivity</b>	Human;Rat;Mouse;
<b>Recommended dilutions</b>	Immunohistochemistry: 1/100 - 1/300. ELISA: 1/5000. Not yet tested in other applications.
<b>Immunogen</b>	The antiserum was produced against synthesized peptide derived from human IKK-gamma around the phosphorylation site of Ser376. AA range:342-391
<b>Specificity</b>	Phospho-IKK $\gamma$ (S376) Polyclonal Antibody detects endogenous levels of IKK $\gamma$ protein only when phosphorylated at S376.
<b>Formulation</b>	Liquid in PBS containing 50% glycerol, 0.5% BSA and 0.02% sodium azide..
<b>Storage</b>	Store at -20°C. Avoid repeated freeze-thaw cycles.
<b>Protein Name</b>	NF-kappa-B essential modulator
<b>Gene Name</b>	IKBKG
<b>Cellular localization</b>	Cytoplasm . Nucleus . Sumoylated NEMO accumulates in the nucleus in response to genotoxic stress. .
<b>Purification</b>	The antibody was affinity-purified from rabbit antiserum by affinity-chromatography using epitope-specific immunogen.
<b>Clonality</b>	Polyclonal

<b>Concentration</b>	1 mg/ml
<b>Observed band</b>	
<b>Human Gene ID</b>	8517
<b>Human Swiss-Prot Number</b>	Q9Y6K9
<b>Alternative Names</b>	IKBKG; FIP3; NEMO; NF-kappa-B essential modulator; NEMO; FIP-3; Ikb kinase-associated protein 1; IKKAP1; Inhibitor of nuclear factor kappa-B kinase subunit gamma; I-kappa-B kinase subunit gamma; IKK-gamma; IKKG; Ikb kinase subunit gamma; NF
<b>Background</b>	This gene encodes the regulatory subunit of the inhibitor of kappaB kinase (IKK) complex, which activates NF-kappaB resulting in activation of genes involved in inflammation, immunity, cell survival, and other pathways. Mutations in this gene result in incontinentia pigmenti, hypohidrotic ectodermal dysplasia, and several other types of immunodeficiencies. A pseudogene highly similar to this locus is located in an adjacent region of the X chromosome. [provided by RefSeq, Mar 2016],



**Immunohistochemistry analysis of paraffin-embedded human brain, using IKK-gamma (Phospho-Ser376) Antibody. The picture on the right is blocked with the phospho peptide.**