

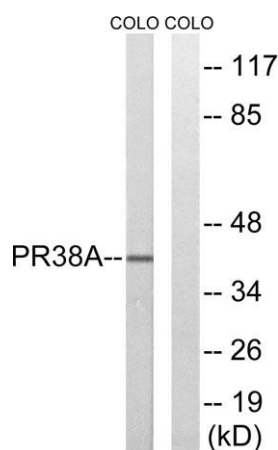
PRPF38A rabbit pAb**Cat#: orb770665 (Manual)**

For research use only. Not intended for diagnostic use.

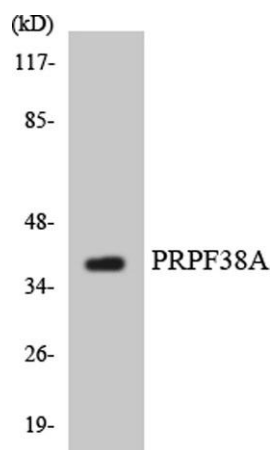
Product Name	PRPF38A rabbit pAb
Host species	Rabbit
Applications	WB;IHC;IF;ELISA
Species Cross-Reactivity	Human;Mouse
Recommended dilutions	Western Blot: 1/500 - 1/2000. Immunohistochemistry: 1/100 - 1/300. ELISA: 1/20000. Not yet tested in other applications.
Immunogen	The antiserum was produced against synthesized peptide derived from human PRPF38A. AA range:104-153
Specificity	PRPF38A Polyclonal Antibody detects endogenous levels of PRPF38A protein.
Formulation	Liquid in PBS containing 50% glycerol, 0.5% BSA and 0.02% sodium azide..
Storage	Store at -20°C. Avoid repeated freeze-thaw cycles.
Protein Name	Pre-mRNA-splicing factor 38A
Gene Name	PRPF38A
Cellular localization	Nucleus .
Purification	The antibody was affinity-purified from rabbit antiserum by affinity-chromatography using epitope-specific immunogen.
Clonality	Polyclonal

Concentration	1 mg/ml
Observed band	40kD
Human Gene ID	84950
Human Swiss-Prot Number	Q8NAV1
Alternative Names	PRPF38A; Pre-mRNA-splicing factor 38A

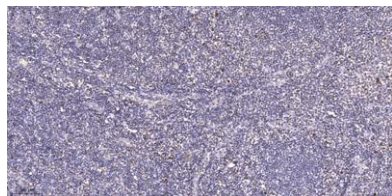
Background function:May be required for pre-mRNA splicing .,similarity:Belongs to the PRP38 family.,



Western blot analysis of lysates from COLO cells, using PRPF38A Antibody. The lane on the right is blocked with the synthesized peptide.



Western blot analysis of the lysates from HUVEC cells using PRPF38A antibody.



Immunohistochemical analysis of paraffin-embedded human tonsil. 1, Antibody was diluted at 1:200(4° overnight). 2, Tris-EDTA,pH9.0 was used for antigen retrieval. 3,Secondary antibody was diluted at 1:200(room temperature, 45min).