

Atg4C rabbit pAb**Cat#: orb770664 (Manual)**

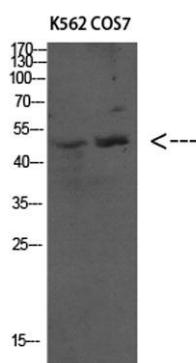
For research use only. Not intended for diagnostic use.

Product Name	Atg4C rabbit pAb
Host species	Rabbit
Applications	WB;IHC;IF;ELISA
Species Cross-Reactivity	Human;Monkey
Recommended dilutions	Western Blot: 1/500 - 1/2000. Immunohistochemistry: 1/100 - 1/300. Immunofluorescence: 1/200 - 1/1000. ELISA: 1/20000. Not yet tested in other applications.
Immunogen	The antiserum was produced against synthesized peptide derived from human ATG4C. AA range:21-70
Specificity	Atg4C Polyclonal Antibody detects endogenous levels of Atg4C protein.
Formulation	Liquid in PBS containing 50% glycerol, 0.5% BSA and 0.02% sodium azide..
Storage	Store at -20°C. Avoid repeated freeze-thaw cycles.
Protein Name	Cysteine protease ATG4C
Gene Name	ATG4C
Cellular localization	Cytoplasm .
Purification	The antibody was affinity-purified from rabbit antiserum by affinity-chromatography using epitope-specific immunogen.
Clonality	Polyclonal

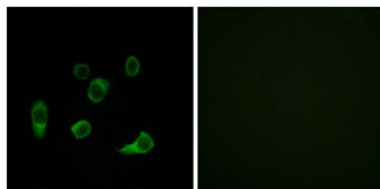
Concentration	1 mg/ml
Observed band	49kD
Human Gene ID	84938
Human Swiss-Prot Number	Q96DT6
Alternative Names	ATG4C; APG4C; AUTL1; AUTL3; Cysteine protease ATG4C; AUT-like 3 cysteine endopeptidase; Autophagin-3; Autophagy-related cysteine endopeptidase 3; Autophagy-related protein 4 homolog C

Background

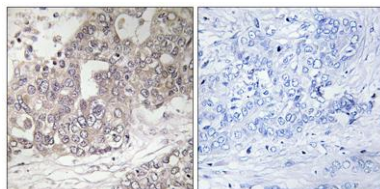
Autophagy is the process by which endogenous proteins and damaged organelles are destroyed intracellularly. Autophagy is postulated to be essential for cell homeostasis and cell remodeling during differentiation, metamorphosis, non-apoptotic cell death, and aging. Reduced levels of autophagy have been described in some malignant tumors, and a role for autophagy in controlling the unregulated cell growth linked to cancer has been proposed. This gene encodes a member of the autophagin protein family. The encoded protein is also designated as a member of the C-54 family of cysteine proteases. Alternate transcriptional splice variants, encoding the same protein, have been characterized. [provided by RefSeq, Jul 2008],



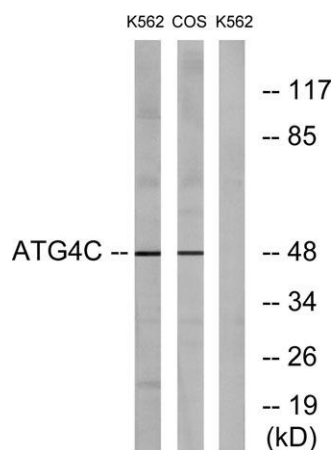
Western Blot analysis of various cells using Antibody diluted at 1:1000. Secondary antibody(catalog#:RS0002) was diluted at 1:20000



Immunofluorescence analysis of HUVEC cells, using ATG4C Antibody. The picture on the right is blocked with the synthesized peptide.



Immunohistochemistry analysis of paraffin-embedded human liver carcinoma tissue, using ATG4C Antibody. The picture on the right is blocked with the synthesized peptide.



Western blot analysis of lysates from K562 and COS7 cells, using ATG4C Antibody. The lane on the right is blocked with the synthesized peptide.