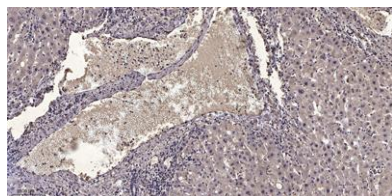


NFATc2IP rabbit pAb**Cat#: orb770660 (Manual)**

For research use only. Not intended for diagnostic use.

Product Name	NFATc2IP rabbit pAb
Host species	Rabbit
Applications	WB;IHC
Species Cross-Reactivity	Human;Rat;Mouse;;Fish
Recommended dilutions	WB 1:500-2000;IHC-p 1:50-300
Immunogen	The antiserum was produced against synthesized peptide derived from human NFATC2IP. AA range:151-200
Specificity	NFATc2IP Polyclonal Antibody detects endogenous levels of NFATc2IP protein.
Formulation	Liquid in PBS containing 50% glycerol, 0.5% BSA and 0.02% sodium azide..
Storage	Store at -20°C. Avoid repeated freeze-thaw cycles.
Protein Name	NFATC2-interacting protein
Gene Name	NFATC2IP
Cellular localization	Nucleus . Cytoplasm . TRAF1 is associated with a fraction of NFATC2IP in the cytoplasm and prevents its translocation to the nucleus. .
Purification	The antibody was affinity-purified from rabbit antiserum by affinity-chromatography using epitope-specific immunogen.
Clonality	Polyclonal

Concentration	1 mg/ml
Observed band	48kD
Human Gene ID	84901
Human Swiss-Prot Number	Q8NCF5
Alternative Names	NFATC2IP; NIP45; NFATC2-interacting protein; 45 kDa NF-AT-interacting protein; 45 kDa NFAT-interacting protein; Nuclear factor of activated T-cells; cytoplasmic 2-interacting protein
Background	function:Plays a role in the inducible expression of cytokine genes in T-cells, especially by increasing NFAT-driven IL-4 production.,PTM:Methylation at the N-terminus by PRMT1 modulates interaction with the NFAT complex and results in augmented cytokine production.,similarity:Contains 1 ubiquitin-like domain.,subcellular location:TRAF1 is associated with a fraction of NFATC2IP in the cytoplasm and prevents its translocation to the nucleus.,subunit:Interacts with NFATC2, TRAF1, TRAF2 and PRMT1.,



Immunohistochemical analysis of paraffin-embedded human liver cancer. 1, Antibody was diluted at 1:200(4° overnight). 2, Tris-EDTA,pH9.0 was used for antigen retrieval. 3,Secondary antibody was diluted at 1:200(room temperature, 45min).