

NHE-7 rabbit pAb**Cat#: orb770649 (Manual)**

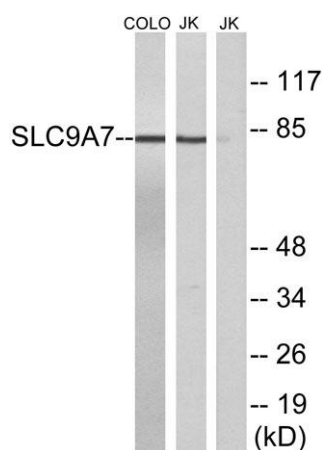
For research use only. Not intended for diagnostic use.

Product Name	NHE-7 rabbit pAb
Host species	Rabbit
Applications	WB;ELISA
Species Cross-Reactivity	Human;Mouse;Rat
Recommended dilutions	Western Blot: 1/500 - 1/2000. ELISA: 1/10000. Not yet tested in other applications.
Immunogen	The antiserum was produced against synthesized peptide derived from human SLC9A7. AA range:531-580
Specificity	NHE-7 Polyclonal Antibody detects endogenous levels of NHE-7 protein.
Formulation	Liquid in PBS containing 50% glycerol, 0.5% BSA and 0.02% sodium azide..
Storage	Store at -20°C. Avoid repeated freeze-thaw cycles.
Protein Name	Sodium/hydrogen exchanger 7
Gene Name	SLC9A7
Cellular localization	Golgi apparatus, trans-Golgi network membrane ; Multi-pass membrane protein . Recycling endosome membrane ; Multi-pass membrane protein . Cell membrane ; Multi-pass membrane protein .
Purification	The antibody was affinity-purified from rabbit antiserum by affinity-chromatography using epitope-specific immunogen.

Clonality	Polyclonal
Concentration	1 mg/ml
Observed band	80kD
Human Gene ID	84679
Human Swiss-Prot Number	Q96T83
Alternative Names	SLC9A7; NHE7; Sodium/hydrogen exchanger 7; Na(+)/H(+) exchanger 7; NHE-7; Solute carrier family 9 member 7

Background

This gene encodes a sodium and potassium/ proton antiporter that is a member of the solute carrier family 9 protein family. The encoded protein is primarily localized to the trans-Golgi network and is involved in maintaining pH homeostasis in organelles along the secretory and endocytic pathways. This protein may enhance cell growth of certain breast tumors. This gene is part of a gene cluster on chromosome Xp11.23. A pseudogene of this gene is found on chromosome 12. Alternate splicing results in multiple transcript variants. [provided by RefSeq, Mar 2012],



Western blot analysis of lysates from Jurkat and COLO cells, using SLC9A7 Antibody. The lane on the right is blocked with the synthesized peptide.