

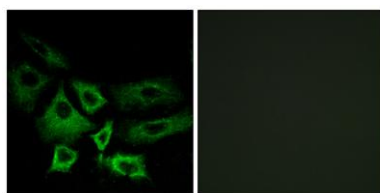
**NT5C1A rabbit pAb****Cat#: orb770641 (Manual)**

For research use only. Not intended for diagnostic use.

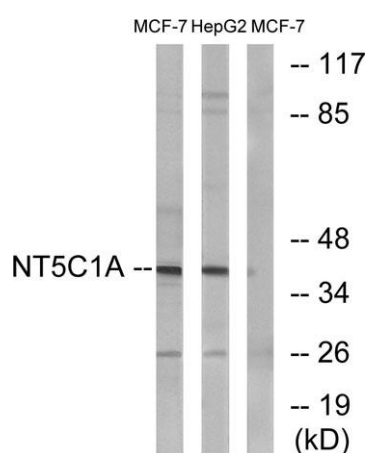
<b>Product Name</b>	NT5C1A rabbit pAb
<b>Host species</b>	Rabbit
<b>Applications</b>	WB;IF;ELISA
<b>Species Cross-Reactivity</b>	Human;Mouse
<b>Recommended dilutions</b>	Western Blot: 1/500 - 1/2000. Immunofluorescence: 1/200 - 1/1000. ELISA: 1/20000. Not yet tested in other applications.
<b>Immunogen</b>	The antiserum was produced against synthesized peptide derived from human NT5C1A. AA range:151-200
<b>Specificity</b>	NT5C1A Polyclonal Antibody detects endogenous levels of NT5C1A protein.
<b>Formulation</b>	Liquid in PBS containing 50% glycerol, 0.5% BSA and 0.02% sodium azide..
<b>Storage</b>	Store at -20°C. Avoid repeated freeze-thaw cycles.
<b>Protein Name</b>	Cytosolic 5'-nucleotidase 1A
<b>Gene Name</b>	NT5C1A
<b>Cellular localization</b>	Cytoplasm.
<b>Purification</b>	The antibody was affinity-purified from rabbit antiserum by affinity-chromatography using epitope-specific immunogen.
<b>Clonality</b>	Polyclonal

<b>Concentration</b>	1 mg/ml
<b>Observed band</b>	41kD
<b>Human Gene ID</b>	84618
<b>Human Swiss-Prot Number</b>	Q9BXI3
<b>Alternative Names</b>	NT5C1A; Cytosolic 5'-nucleotidase 1A; cN1A; Cytosolic 5'-nucleotidase IA; cN-I; cN-IA

**Background** Cytosolic nucleotidases, such as NT5C1A, dephosphorylate nucleoside monophosphates (Hunsucker et al., 2001 [PubMed 11133996]).[supplied by OMIM, Mar 2008],



**Immunofluorescence analysis of A549 cells, using NT5C1A Antibody. The picture on the right is blocked with the synthesized peptide.**



**Western blot analysis of lysates from MCF-7 and HepG2 cells, using NT5C1A Antibody. The lane on the right is blocked with the synthesized peptide.**